

bsm-30099M**[Primary Antibody]****human CD22 Mouse mAb****BioSS**
ANTIBODIES

www.bioss.com.cn

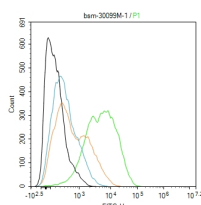
sales@bioss.com.cn

techsupport@bioss.com.cn

400-901-9800

— DATASHEET —

Host: Mouse	Isotype: Mouse IgG1	Applications: Flow-Cyt (1ug/Test) Reactivity: Human Predicted MW.: 91 kDa Subcellular Location: Cell membrane
Clonality: Monoclonal	CloneNo.: HIB22	
GeneID: 933	SWISS: P20273	
Target: human CD22		
Purification: affinity purified by Protein G		
Concentration: 1mg/ml		
Storage: 0.01M TBS (pH7.4). Shipped at 4°C. Store at -20°C for one year. Avoid repeated freeze/thaw cycles.		
Background: Predicted to enable CD4 receptor binding activity; protein phosphatase binding activity; and sialic acid binding activity. Involved in B cell activation; negative regulation of B cell receptor signaling pathway; and regulation of endocytosis. Located in early endosome and recycling endosome. [provided by Alliance of Genome Resources, Nov 2021]		

— VALIDATION IMAGES —

Blank control:Daudi. Primary Antibody (green line): Mouse Anti-human CD22 antibody (bsm-30099M) Dilution: 1ug/Test; Secondary Antibody (white blue line) : Goat anti-mouse IgG-FITC Dilution: 0.5ug/Test. Isotype control (orange line) : Normal Rabbit IgG Protocol

The cells were incubated in 5%BSA to block non-specific protein-protein interactions for 30 min at room temperature. Cells stained with Primary Antibody for 30 min at room temperature. The secondary antibody used for 40 min at room temperature. Acquisition of 20,000 events was performed.