

bs-24218R**[Primary Antibody]****Phospho-Aurora B (Thr236) Rabbit pAb****BioSS**
ANTIBODIES

www.bioss.com.cn

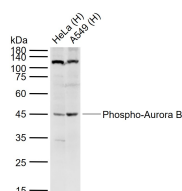
sales@bioss.com.cn

techsupport@bioss.com.cn

400-901-9800

— DATASHEET —**Host:** Rabbit**Isotype:** IgG**Clonality:** Polyclonal**GeneID:** 9212**SWISS:** Q96GD4**Target:** Phospho-Aurora B (Thr236)**Immunogen:** KLH conjugated synthetic peptide derived from human Aurora B around the phosphorylation site of(Thr236): CG(p-T)LD.**Purification:** affinity purified by Protein A**Concentration:** 1mg/ml**Storage:** 0.01M TBS (pH7.4) with 1% BSA, 0.02% Proclin300 and 50% Glycerol.

Shipped at 4°C. Store at -20°C for one year. Avoid repeated freeze/thaw cycles.

Background: This gene encodes a member of the aurora kinase subfamily of serine/threonine kinases. The genes encoding the other two members of this subfamily are located on chromosomes 19 and 20. These kinases participate in the regulation of segregation of chromosomes during mitosis and meiosis through association with microtubules. A pseudogene of this gene is located on chromosome 8. Multiple transcript variants encoding different isoforms have been found for this gene. [provided by RefSeq, Feb 2012].**Applications:** **WB** (1:500-2000)**IHC-P** (1:100-500)**IHC-F** (1:100-500)**IF** (1:100-500)**ICC/IF** (1:100-500)**ELISA** (1:5000-10000)**Reactivity:** Human (predicted: Mouse, Rat, Cow)**Predicted MW.:** 39 kDa**Subcellular Location:** Cytoplasm ,Nucleus**— VALIDATION IMAGES —**

Sample: Lane 1: Human HeLa cell lysates Lane 2: Human A549 cell lysates
 Primary: Anti-Phospho-Aurora B (Thr236) (bs-24218R) at 1/1000 dilution
 Secondary: IRDye800CW Goat Anti-Rabbit IgG at 1/20000 dilution
 Predicted band size: 39 kDa
 Observed band size: 45 kDa