

**bsm-60636R****[ Primary Antibody ]****Bioss**  
ANTIBODIES

www.bioss.com.cn

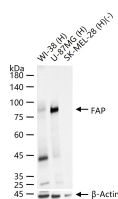
sales@bioss.com.cn

techsupport@bioss.com.cn

400-901-9800

**FAP Recombinant Rabbit mAb****— DATASHEET —**

<b>Host:</b> Rabbit <b>Clonality:</b> Recombinant <b>GeneID:</b> 2191 <b>Target:</b> FAP <b>Purification:</b> affinity purified by Protein A <b>Concentration:</b> 1mg/ml <b>Storage:</b> Size : 25ul/50ul/100ul/200ul 0.01M TBS (pH7.4) with 1% BSA, 0.02% Proclin300 and 50% Glycerol. Size : 200ug (PBS only) 0.01M PBS Shipped at 4°C. Store at -20°C for one year. Avoid repeated freeze/thaw cycles. <b>Background:</b> The protein encoded by this gene is a homodimeric integral membrane gelatinase belonging to the serine protease family. It is selectively expressed in reactive stromal fibroblasts of epithelial cancers, granulation tissue of healing wounds, and malignant cells of bone and soft tissue sarcomas. This protein is thought to be involved in the control of fibroblast growth or epithelial-mesenchymal interactions during development, tissue repair, and epithelial carcinogenesis. Alternatively spliced transcript variants encoding different isoforms have been found for this gene. [provided by RefSeq, Apr 2014]	<b>Isotype:</b> IgG <b>CloneNo.:</b> 8F2 <b>SWISS:</b> Q12884	<b>Applications:</b> WB (1:500-2000) <b>Reactivity:</b> Human  <b>Predicted MW.:</b> 88 kDa <b>Subcellular Location:</b> Secreted ,Cell membrane ,Cytoplasm
---	---	---

**— VALIDATION IMAGES —**

25 ug total protein per lane of various lysates (see on figure) probed with FAP monoclonal antibody, unconjugated (bsm-60636R) at 1:1000 dilution and 4°C overnight incubation. Followed by conjugated secondary antibody incubation at r.t. for 60 min.

**— SELECTED CITATIONS —**

- **[IF=3.8]** Ming Li. et al. Fibroblast activating protein promotes the proliferation, migration, and activation of fibroblasts in oral submucous fibrosis. ORAL DIS. 2023 Jun;; WB,IHC ;Human. 37357365