

bs-23314R**[Primary Antibody]****DEPTOR Rabbit pAb****BioSS**
ANTIBODIES

www.bioss.com.cn

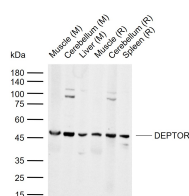
sales@bioss.com.cn

techsupport@bioss.com.cn

400-901-9800

— DATASHEET —

Host: Rabbit Clonality: Polyclonal GeneID: 64798 Target: DEPTOR Immunogen: KLH conjugated synthetic peptide derived from human DEPTOR: 201-300/409. Purification: affinity purified by Protein A Concentration: 1mg/ml Storage: 0.01M TBS (pH7.4) with 1% BSA, 0.02% Proclin300 and 50% Glycerol. Shipped at 4°C. Store at -20°C for one year. Avoid repeated freeze/thaw cycles. Background: DEPTOR (DEP domain containing MTOR-interacting protein), also known as DEP.6 or DEPDC6 (DEP domain-containing protein 6), is a 409 amino acid protein that negatively regulates mTORC1 and mTORC2 pathways. DEPTOR interacts with FRAP via its PDZ domain, and undergoes post-translational phosphorylation. Containing two DEP domains and one PDZ (DHR) domain, DEPTOR is encoded by a gene that maps to human chromosome 8q24.12. Chromosome 8 consists of nearly 146 million base pairs, encodes over 800 genes and is associated with a variety of diseases and malignancies. Schizophrenia, bipolar disorder, Trisomy 8, Pfeiffer syndrome, congenital hypothyroidism, Waardenburg syndrome and some leukemias and lymphomas are thought to occur as a result of defects in specific genes that map to chromosome 8.	Isotype: IgG SWISS: Q8TB45 Applications: WB (1:500-2000) Reactivity: Mouse, Rat (predicted: Human, Cow, Dog, Horse) Predicted MW.: 46 kDa Subcellular Location: Cytoplasm
--	---

— VALIDATION IMAGES —

Sample: Lane 1: Mouse Muscle tissue lysates
 Lane 2: Mouse Cerebellum tissue lysates Lane 3:
 Mouse Liver tissue lysates Lane 4: Rat Muscle
 tissue lysates Lane 5: Rat Cerebellum tissue
 lysates Lane 6: Rat Spleen tissue lysates Primary:
 Anti-DEPTOR (bs-23314R) at 1/1000 dilution
 Secondary: IRDye800CW Goat Anti-Rabbit IgG at
 1/20000 dilution Predicted band size: 46 kDa
 Observed band size: 46 kDa