

bs-5141R**[Primary Antibody]****Bioss**
ANTIBODIES

www.bioss.com.cn

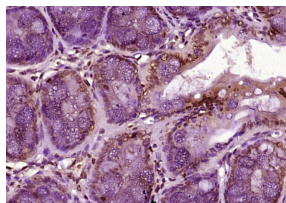
sales@bioss.com.cn

techsupport@bioss.com.cn

400-901-9800

MATR3 Rabbit pAb**— DATASHEET —**

Host: Rabbit	Isotype: IgG	Applications: IHC-P (1:100-500) IHC-F (1:100-500) IF (1:100-500) Reactivity: Rat (predicted: Human, Mouse, Rabbit, Pig, Cow, Chicken, Dog, Horse) Predicted MW.: 95 kDa Subcellular Location: Nucleus
Clonality: Polyclonal		
GeneID: 9782	SWISS: P43243	
Target: MATR3		
Immunogen: KLH conjugated synthetic peptide derived from human Matrin 3: 421-520/847.		
Purification: affinity purified by Protein A		
Concentration: 1mg/ml		
Storage: 0.01M TBS (pH7.4) with 1% BSA, 0.02% Proclin300 and 50% Glycerol. Shipped at 4°C. Store at -20°C for one year. Avoid repeated freeze/thaw cycles.		
Background: Matrin 3 (MATR3) is an internal nuclear matrix protein that may play a role in transcription or may interact with other nuclear matrix proteins to form the internal fibrogranular network. In association with the SFPQ-NONO heteromer MATR3 may play a role in nuclear retention of defective RNAs. MATR3 forms part of complex consisting of SFPQ, NONO and MATR3. The protein contains 1 matrin type zinc finger and 2 RRM (RNA recognition motif) domains. Two transcript variants encoding the same protein have been identified for this gene.		

— VALIDATION IMAGES —

Paraformaldehyde-fixed, paraffin embedded (rat colon tissue); Antigen retrieval by boiling in sodium citrate buffer (pH6.0) for 15min; Block endogenous peroxidase by 3% hydrogen peroxide for 20 minutes; Blocking buffer (normal goat serum) at 37°C for 30min; Antibody incubation with (Matrin 3) Polyclonal Antibody, Unconjugated (bs-5141R) at 1:400 overnight at 4°C, followed by operating according to SP Kit(Rabbit) (sp-0023) instructions and DAB staining.