

bs-21873R**[Primary Antibody]****Thyroid hormone receptor alpha Rabbit pAb****Bioss**
ANTIBODIES

www.bioss.com.cn

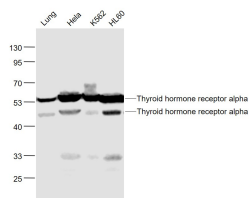
sales@bioss.com.cn

techsupport@bioss.com.cn

400-901-9800

— DATASHEET —

Host: Rabbit	Isotype: IgG	Applications: WB (1:500-2000)
Clonality: Polyclonal		Reactivity: Human, Mouse (predicted: Rat, Rabbit, Pig, Sheep, Cow, Dog)
GeneID: 7067	SWISS: P10827	Predicted MW.: 45/54 kDa
Target: Thyroid hormone receptor alpha		Subcellular Location: Nucleus
Immunogen: KLH conjugated synthetic peptide derived from human Thyroid hormone receptor alpha : 1-100/490.		
Purification: affinity purified by Protein A		
Concentration: 1mg/ml		
Storage: 0.01M TBS (pH7.4) with 1% BSA, 0.02% Proclin300 and 50% Glycerol. Shipped at 4°C. Store at -20°C for one year. Avoid repeated freeze/thaw cycles.		
Background: The protein encoded by this gene is a nuclear hormone receptor for triiodothyronine. It is one of the several receptors for thyroid hormone, and has been shown to mediate the biological activities of thyroid hormone. Knockout studies in mice suggest that the different receptors, while having certain extent of redundancy, may mediate different functions of thyroid hormone. Alternatively spliced transcript variants encoding distinct isoforms have been reported. [provided by RefSeq, Jul 2008].		

— VALIDATION IMAGES —

Sample: Lung (Mouse) Lysate at 40 ug
Hela(Human) Cell Lysate at 30 ug K562(Human)
Cell Lysate at 30 ug HL60(Human) Cell Lysate at
30 ug Primary: Anti- Thyroid hormone receptor
alpha (bs-21873R) at 1/1000 dilution Secondary:
IRDye800CW Goat Anti-Rabbit IgG at 1/20000
dilution Predicted band size: 45/54 kD Observed
band size: 45/54 kD