

## beta 2 Microglobulin Rabbit pAb

Catalog Number: bs-41176R

Target Protein: beta 2 Microglobulin

Concentration: 1mg/ml

Form: Liquid

Host: Rabbit

Clonality: Polyclonal

Isotype: IgG

Applications: WB (1:500-2000)

Reactivity: Human

Predicted MW: 13/27 kDa

Entrez Gene: 567

Swiss Prot: P61769

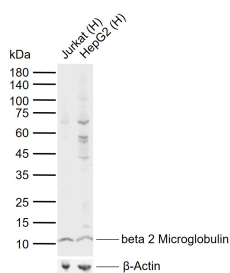
Purification: affinity purified by Protein A

Storage: 0.01M TBS (pH7.4) with 1% BSA, 0.02% Proclin300 and 50% Glycerol.

Shipped at 4°C. Store at -20°C for one year. Avoid repeated freeze/thaw cycles.

**Background:** This gene encodes a serum protein found in association with the major histocompatibility complex (MHC) class I heavy chain on the surface of nearly all nucleated cells. The protein has a predominantly beta-pleated sheet structure that can form amyloid fibrils in some pathological conditions. A mutation in this gene has been shown to result in hypercatabolic hypoproteinemia.[provided by RefSeq, Sep 2009].

### VALIDATION IMAGES



Sample: Lane 1: Human Jurkat cell lysates Lane 2: Human HepG2 cell lysates Primary: Anti-beta 2 Microglobulin (bs-41176R) at 1/1000 dilution Secondary: IRDye800CW Goat Anti-Rabbit IgG at 1/20000 dilution Predicted band size: 13/27 kDa Observed band size: 11 kDa