

## Motilin Rabbit pAb

Catalog Number: bs-1445R

Target Protein: Motilin

Concentration: 1mg/ml

Form: Liquid

Host: Rabbit

Clonality: Polyclonal

Isotype: IgG

Applications: IHC-P (1:100-500), IHC-F (1:100-500), IF (1:100-500)

Reactivity: Rat (predicted:Human, Rabbit, Sheep, Cow, Dog, Horse)

Predicted MW: 10.3 kDa

Entrez Gene: 4295

Swiss Prot: P12872

Source: KLH conjugated synthetic peptide derived from human MLN: 51-115/115.

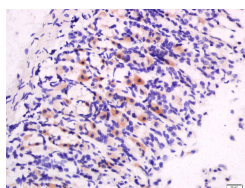
Purification: affinity purified by Protein A

Storage: 0.01M TBS (pH7.4) with 1% BSA, 0.02% Proclin300 and 50% Glycerol.

Shipped at 4°C. Store at -20°C for one year. Avoid repeated freeze/thaw cycles.

**Background:** The protein encoded by this gene is a member of a family that includes putative ATP-binding proteins involved in vesicle transport and fusion, 26S proteasome function, and assembly of peroxisomes. This protein, as a structural protein, is associated with clathrin, and heat-shock protein Hsc70, to form a complex. It has been implicated in a number of cellular events that are regulated during mitosis, including homotypic membrane fusion, spindle pole body function, and ubiquitin-dependent protein degradation. [provided by RefSeq, Jul 2008]

### VALIDATION IMAGES



Tissue/cell: Rat stomach tissue; 4% Paraformaldehyde-fixed and paraffin-embedded; Antigen retrieval: citrate buffer ( 0.01M, pH 6.0 ), Boiling bathing for 15min; Block endogenous peroxidase by 3% Hydrogen peroxide for 30min; Blocking buffer (normal goat serum,C-0005) at 37°C for 20 min; Incubation: Anti-Motilin Polyclonal Antibody, Unconjugated(bs-1445R) 1:200, overnight at 4°C, followed by conjugation to the secondary antibody(SP-0023) and DAB(C-0010) staining

## PRODUCT SPECIFIC PUBLICATIONS

---

[IF=15.1] Jiao Ma. et al. Facile fabrication of liquid metal enabled conductive zwitterionic hydrogel for robust electrochemical sensing in complex serum. CHEM ENG J. 2024 Jul;492:152433 Other ; . 10.1016/j.cej.2024.152433

[IF=10.257] Jiao Ma. et al. A robust composite hydrogel consisting of polypyrrole and  $\beta$ -cyclodextrin-based supramolecular complex for the label-free amperometric immunodetection of motilin with well-defined dual signal response and high sensitivity. Biosens Bioelectron. 2021 Feb;173:112810 Other ; . 33212402

[IF=1.52] Liang Q et al. Evaluation of a modified rat model for functional dyspepsia.Saudi J Gastroenterol. 2018 Jul-Aug;24(4):228-235. IHC ; Rat . 29652029