

bs-1587R

[Primary Antibody]

factor XIII Rabbit pAb

BioSS
ANTIBODIES

www.bioss.com.cn

sales@bioss.com.cn

techsupport@bioss.com.cn

400-901-9800

— DATASHEET —

Host: Rabbit

Isotype: IgG

Clonality: Polyclonal

Target: factor XIII

Immunogen: KLH conjugated synthetic peptide derived from human factor XIII: 331-732/732.

Purification: affinity purified by Protein A

Concentration: 1mg/ml

Storage: 0.01M TBS (pH7.4) with 1% BSA, 0.02% Proclin300 and 50% Glycerol.
Shipped at 4°C. Store at -20°C for one year. Avoid repeated freeze/thaw cycles.

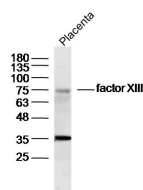
Applications: WB (1:500-2000)

Flow-Cyt (1ug/Test)

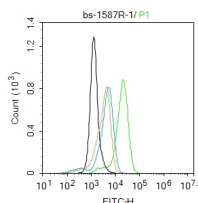
Reactivity: Human, Mouse
(predicted: Rat,
Rabbit, Pig, Cow, Dog)

Predicted MW.: 76 kDa

— VALIDATION IMAGES —



Sample: Placenta (mouse) cell Lysate at 40 ug
Primary: Anti-factor XIII (bs-1587R) at 1/300
dilution Secondary: IRDye800CW Goat Anti-
Rabbit IgG at 1/20000 dilution Predicted band
size: 76 kD Observed band size: 76 kD



Blank control: THP-1. Primary Antibody (green line): Rabbit Anti-factor XIII antibody (bs-1587R)
Dilution: 1 µg / 10⁶ cells; Isotype Control Antibody (orange line): Rabbit IgG. Secondary Antibody: Goat anti-rabbit IgG-FITC Dilution: 0.5 µg / test. Protocol The cells were fixed with 4% PFA (10 min at room temperature) and then permeabilized with 0.1% PBST for 20 min at room temperature. The cells were then incubated in 5% BSA to block non-specific protein-protein interactions for 30 min at room temperature. Cells stained with Primary Antibody for 30 min at room temperature. The secondary antibody used for 40 min at room temperature. Acquisition of 20,000 events was performed.