

bs-12502R**[Primary Antibody]****Apolipoprotein O Rabbit pAb****BioSS**
ANTIBODIES

www.bioss.com.cn

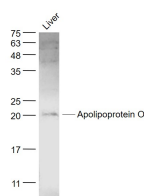
sales@bioss.com.cn

techsupport@bioss.com.cn

400-901-9800

— DATASHEET —

Host: Rabbit	Isotype: IgG	Applications: WB (1:500-2000)
Clonality: Polyclonal		Reactivity: Rat (predicted: Human, Mouse, Rabbit, Pig, Sheep, Cow, Chicken, Dog, Horse)
GeneID: 79135	SWISS: Q9BUR5	Predicted MW.: 20 kDa
Target: Apolipoprotein O		Subcellular Location: Secreted ,Cell membrane
Immunogen: KLH conjugated synthetic peptide derived from human ApoO/Apolipoprotein O: 101-198/198.		
Purification: affinity purified by Protein A		
Concentration: 1mg/ml		
Storage: 0.01M TBS (pH7.4) with 1% BSA, 0.02% Proclin300 and 50% Glycerol. Shipped at 4°C. Store at -20°C for one year. Avoid repeated freeze/thaw cycles.		
Background: Apolipoproteins are a family of fatty-acid binding proteins that transport fat through the bloodstream in the form of lipoproteins. ApoO (Apolipoprotein O), also known as FAM121B or My025, is a 198 amino acid single-pass membrane protein that belongs to the apolipoprotein family. Expressed ubiquitously with particularly high expression in diabetic heart tissue, apoO functions to promote the transport of cholesterol from macrophage cells and may be involved in regulatory mechanisms that protect lipid accumulation within the heart. ApoO is present in high density lipoproteins (HDLs) and low density lipoproteins (LDLs) and is secreted by an MTP (microsomal triglyceride transfer protein)-dependent mechanism. Two isoforms of apoO exist due to alternative splicing events.		

— VALIDATION IMAGES —

Sample: Liver (Rat) Lysate at 40 ug
Primary: Anti-Apolipoprotein O (bs-12502R) at 1/1000 dilution
Secondary: IRDye800CW Goat Anti-Rabbit IgG at 1/20000 dilution
Predicted band size: 20 kD
Observed band size: 20 kD