

bs-12498R**[Primary Antibody]****APOL1 Rabbit pAb****BioSS**
ANTIBODIES

www.bioss.com.cn

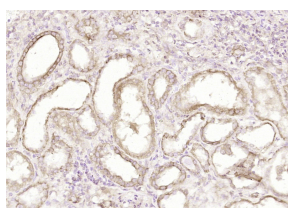
sales@bioss.com.cn

techsupport@bioss.com.cn

400-901-9800

— DATASHEET —

Host: Rabbit Clonality: Polyclonal GeneID: 8542 Target: APOL1 Immunogen: KLH conjugated synthetic peptide derived from human APOL1/Apolipoprotein L: 201-300/398. Purification: affinity purified by Protein A Concentration: 1mg/ml Storage: 0.01M TBS (pH7.4) with 1% BSA, 0.02% Proclin300 and 50% Glycerol. Shipped at 4°C. Store at -20°C for one year. Avoid repeated freeze/thaw cycles. Background: Apolipoproteins are protein components of plasma lipoproteins (1). The apolipoprotein L gene family encodes six highly homologous proteins designated apoL-I to -VI, which are associated with large high density type lipoproteins (HDL) (2,3). The human apoL family maps to chromosome 22q12.1-13.1 within a 127,000-bp region (4). ApoL has been characterized as a pancreas specific, 383-amino acid protein that contains a 12-amino acid secretory signal peptide (4). The apoL genes have TATA-less promoters and contain putative sterol regulatory elements, suggesting that transcription of these genes may be coordinated with that of the low density lipoprotein receptor and genes in pathways involving the synthesis of triglycerides and cholesterol (3). ApoL homologs can undergo 10 fold changes in expression during atherosclerotic changes in vascular endothelial cells, which includes the inflammatory reaction of atherosclerotic lesions (5).	Isotype: IgG SWISS: O14791 Applications: IHC-P (1:100-500) IHC-F (1:100-500) IF (1:100-500) Reactivity: Human Predicted MW.: 41 kDa Subcellular Location: Secreted
---	---

— VALIDATION IMAGES —

Paraformaldehyde-fixed, paraffin embedded (Human kidney); Antigen retrieval by boiling in sodium citrate buffer (pH6.0) for 15min; Block endogenous peroxidase by 3% hydrogen peroxide for 20 minutes; Blocking buffer (normal goat serum) at 37°C for 30min; Antibody incubation with (APOL1) Polyclonal Antibody, Unconjugated (bs-12498R) at 1:200 overnight at 4°C, followed by operating according to SP Kit(Rabbit) (sp-0023) instructions and DAB staining.

— SELECTED CITATIONS —

- **[IF=1.889]** Shian Liao. et al. Construction of autophagy prognostic signature and analysis of prospective molecular mechanisms in skin cutaneous melanoma patients. Medicine. 2021 Jun 4; 100(22): e26219 IHC ;Human. 34087900