

**bs-12491R****[ Primary Antibody ]****APOA1BP/AI-BP Rabbit pAb****Bioss**  
**ANTIBODIES**

www.bioss.com.cn

sales@bioss.com.cn

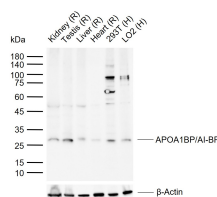
techsupport@bioss.com.cn

400-901-9800

**— DATASHEET —****Host:** Rabbit**Isotype:** IgG**Clonality:** Polyclonal**GeneID:** 128240**SWISS:** Q8NCW5**Target:** APOA1BP/AI-BP**Immunogen:** KLH conjugated synthetic peptide derived from human APOA1BP/AI-BP: 201-288/288.**Purification:** affinity purified by Protein A**Concentration:** 1mg/ml**Storage:** 0.01M TBS (pH7.4) with 1% BSA, 0.02% Proclin300 and 50% Glycerol.

Shipped at 4°C. Store at -20°C for one year. Avoid repeated freeze/thaw cycles.

**Background:** Apolipoproteins are protein components of plasma lipoproteins. Apolipoprotein A-I (ApoA1) promotes cholesterol efflux from tissues to the liver for excretion. ApoA1 is the major protein component of high density lipoprotein (HDL) in the plasma. It can function as a cofactor for lecithin cholesterolacyltransferase, which is responsible for the formation of most plasma cholesteryl esters. AI-BP (Apolipoprotein A-I-binding protein), also known as YjeF N-terminal domain-containing protein 1, is a 288 amino acid secreted protein that binds ApoA1, ApoA2 and HDL. Individuals with impaired renal function show an increased rate of AI-BP excretion, indicating that it is normally reabsorbed within the kidney tubules. AI-BP belongs to the YjeF N-terminal domain protein family, which includes proteins that are frequently involved in oogenesis and spermatogenesis. There are two isoforms of AI-BP that are produced as a result of alternative splicing events.

**Applications:** WB (1:500-2000)**Reactivity:** Human, Rat  
(predicted: Mouse, Rabbit, Pig, Sheep, Cow, Dog, Chimpanzee)**Predicted MW.:** 27 kDa**Subcellular Location:** Secreted**— VALIDATION IMAGES —**

Sample: Lane 1: Rat Kidney tissue lysates Lane 2: Rat Testis tissue lysates Lane 3: Rat Liver tissue lysates Lane 4: Rat Heart tissue lysates Lane 5: Human 293T cell lysates Lane 6: Human LO2 cell lysates  
 Primary: Anti-APOA1BP/AI-BP (bs-12491R) at 1/1000 dilution Secondary: IRDye800CW Goat Anti-Rabbit IgG at 1/20000 dilution  
 Predicted band size: 27 kDa Observed band size: 27 kDa