

bs-10437R**[Primary Antibody]****BioSS**
ANTIBODIES

www.bioss.com.cn

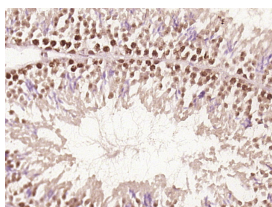
sales@bioss.com.cn

techsupport@bioss.com.cn

400-901-9800

Tex14 Rabbit pAb**— DATASHEET —**

Host: Rabbit	Isotype: IgG	Applications: IHC-P (1:100-500) IHC-F (1:100-500) IF (1:100-500)
Clonality: Polyclonal		
GeneID: 56155	SWISS: Q8IWB6	
Target: Tex14		
Immunogen: KLH conjugated synthetic peptide derived from human Tex14: 101-200/1497.		
Purification: affinity purified by Protein A		Reactivity: Mouse (predicted: Human, Rat, Dog)
Concentration: 1mg/ml		Predicted MW.: 168 kDa
Storage: 0.01M TBS (pH7.4) with 1% BSA, 0.02% Proclin300 and 50% Glycerol. Shipped at 4°C. Store at -20°C for one year. Avoid repeated freeze/thaw cycles.		Subcellular Location: Cytoplasm ,Nucleus
Background: TEX14 is a 1,497 amino acid protein that belongs to the protein kinase superfamily and is expressed in testis. The gene encoding TEX14 is located on chromosome 17 and is required for spermatogenesis and normal structure of the intercellular bridge that connects spermatocytes and spermatogonia. TEX14 co-localizes with the centralspindlin complex, MKLP-1 (mitotic kinesin-like protein 1) and male germ cell Rac GTPase (Rac GTPase-activating protein) and converts these midbody matrix proteins into stable intercellular bridge components. TEX14 contains 3 ANK repeats and 1 protein kinase domain. Three isoforms exist due to alternative splicing events.		

— VALIDATION IMAGES —

Paraformaldehyde-fixed, paraffin embedded (Mouse testis); Antigen retrieval by boiling in sodium citrate buffer (pH6.0) for 15min; Block endogenous peroxidase by 3% hydrogen peroxide for 20 minutes; Blocking buffer (normal goat serum) at 37°C for 30min; Antibody incubation with (Tex14) Polyclonal Antibody, Unconjugated (bs-10437R) at 1:400 overnight at 4°C, followed by operating according to SP Kit(Rabbit) (sp-0023) instructions and DAB staining.