

bs-18331R**[Primary Antibody]****SAKS1/2B28 Rabbit pAb****BioSS**
ANTIBODIES

www.bioss.com.cn

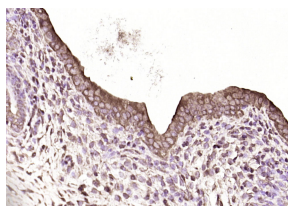
sales@bioss.com.cn

techsupport@bioss.com.cn

400-901-9800

— DATASHEET —

Host: Rabbit	Isotype: IgG	Applications: IHC-P (1:100-500) IHC-F (1:100-500) IF (1:100-500)
Clonality: Polyclonal		
GeneID: 51035	SWISS: Q04323	
Target: SAKS1/2B28		Reactivity: Rat (predicted: Human, Mouse, Pig, Sheep, Cow, Horse)
Immunogen: KLH conjugated synthetic peptide derived from human SAKS1/2B28: 51-150/297.		
Purification: affinity purified by Protein A		Predicted MW.: 33 kDa
Concentration: 1mg/ml		Subcellular Location: Cytoplasm
Storage: 0.01M TBS (pH7.4) with 1% BSA, 0.02% Proclin300 and 50% Glycerol. Shipped at 4°C. Store at -20°C for one year. Avoid repeated freeze/thaw cycles.		
Background: 2B28 is a component of a complex composed of NGLY1, SAKS1, AMFR, VCP and RAD23B, where it acts as an adapter that directs VCP to polyubiquitinated proteins. 2B28 also interacts with Homer 2, which further suggests role for 2B28 in the regulation of protein degradation by ubiquitin-proteasome systems.		

— VALIDATION IMAGES —

Paraformaldehyde-fixed, paraffin embedded (rat uterus); Antigen retrieval by boiling in sodium citrate buffer (pH6.0) for 15min; Block endogenous peroxidase by 3% hydrogen peroxide for 20 minutes; Blocking buffer (normal goat serum) at 37°C for 30min; Antibody incubation with (SAKS1 2B28) Polyclonal Antibody, Unconjugated (bs-18331R) at 1:200 overnight at 4°C, followed by operating according to SP Kit(Rabbit) (sp-0023) instructions and DAB staining.