

## ZFP62 Rabbit pAb

Catalog Number: bs-19128R

Target Protein: ZFP62

Concentration: 1mg/ml

Form: Liquid

Host: Rabbit

Clonality: Polyclonal

Isotype: IgG

Applications: IHC-P (1:100-500), IHC-F (1:100-500), IF (1:100-500)

Reactivity: Rat (predicted:Human, Mouse, Rabbit, Pig, Sheep, Cow, Horse)

Predicted MW: 103 kDa

Subcellular Nucleus

Locations:

Entrez Gene: 643836

Swiss Prot: Q8NB50

Source: KLH conjugated synthetic peptide derived from human ZFP62: 431-530/900.

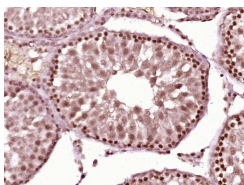
Purification: affinity purified by Protein A

Storage: 0.01M TBS (pH7.4) with 1% BSA, 0.02% Proclin300 and 50% Glycerol.

Shipped at 4°C. Store at -20°C for one year. Avoid repeated freeze/thaw cycles.

Background: Annotation of ZFP62 was placed on AC016572.6 on NCBI's annotation 36.3. This clone has been determined to be redundant, so the annotation was merged with the location on the assembled chromosome. [02 Mar 2009]

### VALIDATION IMAGES



Paraformaldehyde-fixed, paraffin embedded (rat testis tissue); Antigen retrieval by boiling in sodium citrate buffer (pH6.0) for 15min; Block endogenous peroxidase by 3% hydrogen peroxide for 20 minutes; Blocking buffer (normal goat serum) at 37°C for 30min; Antibody incubation with (ZFP62) Polyclonal Antibody, Unconjugated (bs-19128R) at 1:400 overnight at 4°C, followed by operating according to SP Kit(Rabbit) (sp-0023) instructions and DAB staining.