

bs-19122R

[Primary Antibody]

ZFP28 Rabbit pAb

Bioss
ANTIBODIES

www.bioss.com.cn

sales@bioss.com.cn

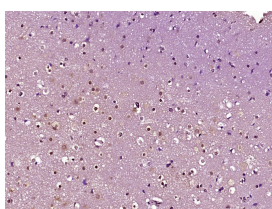
techsupport@bioss.com.cn

400-901-9800

— DATASHEET —

Host: Rabbit	Isotype: IgG	Applications: IHC-P (1:100-500) IHC-F (1:100-500) IF (1:100-500) Reactivity: Human Predicted MW.: 99 kDa Subcellular Location: Nucleus
Clonality: Polyclonal		
GeneID: 140612	SWISS: Q8NHY6	
Target: ZFP28		
Immunogen: KLH conjugated synthetic peptide derived from human ZFP28: 761-868/868.		
Purification: affinity purified by Protein A		
Concentration: 1mg/ml		
Storage: 0.01M TBS (pH7.4) with 1% BSA, 0.02% Proclin300 and 50% Glycerol. Shipped at 4°C. Store at -20°C for one year. Avoid repeated freeze/thaw cycles.		
Background: ZFP28 (ZFP28 Zinc Finger Protein) is a Protein Coding gene. Diseases associated with ZFP28 include Alternating Hemiplegia Of Childhood. Among its related pathways are Gene Expression. GO annotations related to this gene include nucleic acid binding and transcription factor activity, sequence-specific DNA binding. An important paralog of this gene is ZNF470.		

— VALIDATION IMAGES —



Paraformaldehyde-fixed, paraffin embedded (Human brain glioma); Antigen retrieval by boiling in sodium citrate buffer (pH6.0) for 15min; Block endogenous peroxidase by 3% hydrogen peroxide for 20 minutes; Blocking buffer (normal goat serum) at 37°C for 30min; Antibody incubation with (ZFP28) Polyclonal Antibody, Unconjugated (bs-19122R) at 1:400 overnight at 4°C, followed by operating according to SP Kit(Rabbit) (sp-0023) instructions and DAB staining.