

## CSF1R Rabbit pAb

Catalog Number: bs-41371R

Target Protein: CSF1R

Concentration: 1mg/ml

Form: Liquid

Host: Rabbit

Clonality: Polyclonal

Isotype: IgG

Applications: WB (1:500-2000), ELISA (1:5000-10000)

Reactivity: Human

Predicted MW: 59 kDa

Entrez Gene: 1436

Swiss Prot: P07333

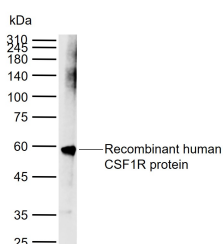
Source: Recombinant human CSF1R protein: 20-516/972.

Storage: 0.01M TBS (pH7.4) with 1% BSA, 0.02% Proclin300 and 50% Glycerol.

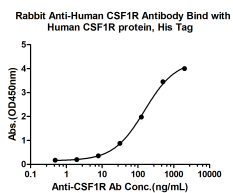
Shipped at 4°C. Store at -20°C for one year. Avoid repeated freeze/thaw cycles.

**Background:** This protein tyrosine kinase transmembrane receptor is the receptor for colony stimulating factor 1, a cytokine which controls the production, differentiation, and function of macrophages. This receptor mediates most if not all of the biological effects of this cytokine. Ligand binding activates the receptor kinase through a process of oligomerization and transphosphorylation. The encoded protein is a member of the CSF1/PDGF receptor family of tyrosine protein kinases and contains 5 immunoglobulin like C2 type domains. CD115 is expressed by cells of the monocytic lineage and by progenitor cells. Mutations in this gene have been associated with a predisposition to myeloid malignancy.

### VALIDATION IMAGES



Sample: Lane 1: Recombinant human CSF1R protein, N-His Primary: Anti-CSF1R (bs-41371R) at 1/1000 dilution Secondary: IRDye800CW Goat Anti-Rabbit IgG at 1/20000 dilution Predicted band size: 59 kDa  
Observed band size: 59 kDa



Measured by its binding ability in a indirect ELISA. Immobilized Human CSF1R protein, His Tag (Cat. bs-41371P) at 2 µg/mL (100 µL/well) can bind Rabbit Anti-Human CSF1R Antibody, the EC50 is 153.1 ng/mL.