

bs-41355R**[Primary Antibody]****IL-20R alpha Rabbit pAb****BioSS**
ANTIBODIES

www.bioss.com.cn

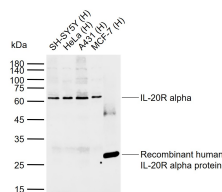
sales@bioss.com.cn

techsupport@bioss.com.cn

400-901-9800

— DATASHEET —

Host: Rabbit	Isotype: IgG	Applications: WB (1:500-2000) ELISA (1:5000-10000)
Clonality: Polyclonal		
GeneID: 237313	SWISS: Q6PHB0	Reactivity: Human, Mouse (predicted: Rat)
Target: IL-20R alpha		
Immunogen: Recombinant mouse IL-20R alpha protein: 30-250/546.		
Purification: affinity purified by Protein A		
Concentration: 1mg/ml		Predicted MW.: 59 kDa
Storage: 0.01M TBS (pH7.4) with 1% BSA, 0.02% Proclin300 and 50% Glycerol. Shipped at 4°C. Store at -20°C for one year. Avoid repeated freeze/thaw cycles.		Subcellular Location: Cell membrane
Background: The protein encoded by this gene is a receptor for interleukin 20 (IL20), a cytokine that may be involved in epidermal function. The receptor of IL20 is a heterodimeric receptor complex consisting of this protein and interleukin 20 receptor beta (IL20B). This gene and IL20B are highly expressed in skin. The expression of both genes is found to be upregulated in Psoriasis. [provided by RefSeq]		

— VALIDATION IMAGES —

Sample: Lane 1: Human SH-SY5Y tissue lysates
 Lane 2: Human HeLa tissue lysates Lane 3:
 Human A431 tissue lysates Lane 4: Human MCF-7
 tissue lysates Lane 5: Recombinant human
 IL-20R alpha protein Primary: Anti-IL-20R alpha
 (bs-41355R) at 1/1000 dilution Secondary:
 IRDye800CW Goat Anti-Rabbit IgG at 1/20000
 dilution Predicted band size: 59 kDa Observed
 band size: 62,27.6 kDa