

## IL-20R alpha Rabbit pAb

Catalog Number: bs-41354R

Target Protein: IL-20R alpha

Concentration: 1mg/ml

Form: Liquid

Host: Rabbit

Clonality: Polyclonal

Isotype: IgG

Applications: WB (1:500-2000), ELISA (1:5000-10000)

Reactivity: Human, Mouse, Rat

Predicted MW: 59 kDa

Entrez Gene: 53832

Swiss Prot: Q9UHF4

Source: Recombinant human IL-20R alpha protein: 30-250/553.

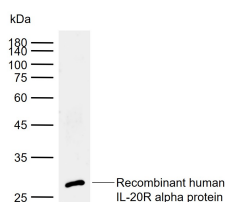
Purification: affinity purified by Protein A

Storage: 0.01M TBS (pH7.4) with 1% BSA, 0.02% Proclin300 and 50% Glycerol.

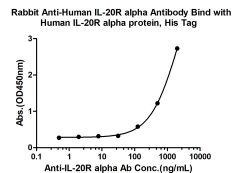
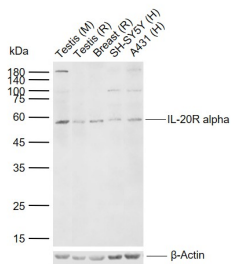
Shipped at 4°C. Store at -20°C for one year. Avoid repeated freeze/thaw cycles.

**Background:** The protein encoded by this gene is a receptor for interleukin 20 (IL20), a cytokine that may be involved in epidermal function. The receptor of IL20 is a heterodimeric receptor complex consisting of this protein and interleukin 20 receptor beta (IL20B). This gene and IL20B are highly expressed in skin. The expression of both genes is found to be upregulated in Psoriasis. [provided by RefSeq]

### VALIDATION IMAGES



Sample: Lane 1: Recombinant human IL-20R alpha protein Primary: Anti-IL-20R alpha (bs-41354R) at 1/1000 dilution Secondary: IRDye800CW Goat Anti-Rabbit IgG at 1/20000 dilution Predicted band size: 59 kDa  
Observed band size: 28 kDa



Sample: Lane 1: Mouse Testis tissue lysates Lane 2: Rat Testis tissue lysates Lane 3: Rat Breast tissue lysates Lane 4: Human SH-SY5Y cell lysates Lane 5: Human A431 cell lysates Primary: Anti-IL-20R alpha (bs-41354R) at 1/1000 dilution Secondary: IRDye800CW Goat Anti-Rabbit IgG at 1/20000 dilution Predicted band size: 59 kDa Observed band size: 59 kDa

Measured by its binding ability in a indirect ELISA. Immobilized Human IL-20R alpha protein, His Tag (Cat. bs-41354P) at 2 µg/mL (100 µL/well) can bind Rabbit Anti- Human IL-20R alpha Antibody, the EC50 is 2249 ng/mL.