

bs-11396R**[Primary Antibody]****EXOC3 Rabbit pAb****BioSS**
ANTIBODIES

www.bioss.com.cn

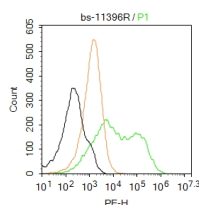
sales@bioss.com.cn

techsupport@bioss.com.cn

400-901-9800

— DATASHEET —

Host: Rabbit	Isotype: IgG	Applications: Flow-Cyt (2ug/Test)
Clonality: Polyclonal		Reactivity: Human (predicted: Mouse, Rat, Rabbit, Sheep, Cow, Dog)
GeneID: 11336	SWISS: O60645	Predicted MW.: 87 kDa
Target: EXOC3		Subcellular Location: Cytoplasm
Immunogen: KLH conjugated synthetic peptide derived from human EXOC3: 714-756/756.		
Purification: affinity purified by Protein A		
Concentration: 1mg/ml		
Storage: 0.01M TBS (pH7.4) with 1% BSA, 0.02% Proclin300 and 50% Glycerol. Shipped at 4°C. Store at -20°C for one year. Avoid repeated freeze/thaw cycles.		
Background: The protein encoded by this gene is a component of the exocyst complex, a multiple protein complex essential for targeting exocytic vesicles to specific docking sites on the plasma membrane. Though best characterized in yeast, the component proteins and functions of exocyst complex have been demonstrated to be highly conserved in higher eukaryotes. At least eight components of the exocyst complex, including this protein, are found to interact with the actin cytoskeletal remodeling and vesicle transport machinery. The complex is also essential for the biogenesis of epithelial cell surface polarity.		

— VALIDATION IMAGES —

Blank control: Hela. Primary Antibody (green line): Rabbit Anti-rSec6 antibody (bs-11396R)
Dilution: 2µg / 10⁶ cells; Isotype Control Antibody (orange line): Rabbit IgG. Secondary Antibody: Goat anti-rabbit IgG-PE Dilution: 1µg / test. Protocol The cells were incubated in 5% BSA to block non-specific protein-protein interactions for 30 min at room temperature. Cells stained with Primary Antibody for 30 min at room temperature. The secondary antibody used for 40 min at room temperature. Acquisition of 20,000 events was performed.