

bs-11394R**[Primary Antibody]****Utrophin Rabbit pAb****BioSS**
ANTIBODIES

www.bioss.com.cn

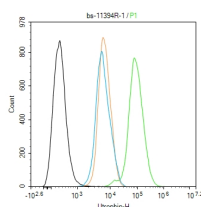
sales@bioss.com.cn

techsupport@bioss.com.cn

400-901-9800

— DATASHEET —

<p>Host: Rabbit</p> <p>Clonality: Polyclonal</p> <p>GeneID: 7402</p> <p>Target: Utrophin</p> <p>Immunogen: KLH conjugated synthetic peptide derived from human Utrophin: 3110-3156/3433.</p> <p>Purification: affinity purified by Protein A</p> <p>Concentration: 1mg/ml</p> <p>Storage: 0.01M TBS (pH7.4) with 1% BSA, 0.02% Proclin300 and 50% Glycerol. Shipped at 4°C. Store at -20°C for one year. Avoid repeated freeze/thaw cycles.</p> <p>Background: Dystrophin and utrophin are related structural, Actin-binding proteins that are involved in anchoring the cytoskeleton to the plasma membrane. Dystrophin is the protein product of the Duchenne/Becker muscular dystrophy gene. Dystrophin expression is found in muscle and brain tissues, where it is localized to the inner surface of the plasma membrane. It has been speculated that alternative splicing of the carboxy terminus allows dystrophin to interact with a variety of proteins. Research has shown that the loss of dystrophin-associated proteins in Duchenne afflicted muscle is due to the absence of dystrophin rather than to muscle degradation and that the lack of dystrophin results in the loss of linkage between the cytoskeleton and the extracellular matrix. Evidence suggests that the upregulation of utrophin can reduce the dystrophic pathology.</p>	<p>Isotype: IgG</p> <p>SWISS: P46939</p> <p>Applications: Flow-Cyt (1ug/Test)</p> <p>Reactivity: Human (predicted: Mouse, Rat, Pig, Sheep, Cow, Chicken, Dog)</p> <p>Predicted MW.: 394 kDa</p> <p>Subcellular Location: Cell membrane ,Cytoplasm</p>
---	---

— VALIDATION IMAGES —

Blank control (black line) :Hela. Primary Antibody (green line): Rabbit Anti-Utrophin antibody (bs-11394R) Dilution:1ug/Test; Secondary Antibody (white blue line) : Goat anti-rabbit IgG-AF488 Dilution: 0.5ug/Test. Isotype control (orange line) : Normal Rabbit IgG Protocol The cells were fixed with 4% PFA (10min at room temperature)and then permeabilized with 90% ice-cold methanol for 20 min at -20°C, The cells were then incubated in 5%BSA to block non-specific protein-protein interactions for 30 min at room temperature .Cells stained with Primary Antibody for 30 min at room temperature. The secondary antibody used for 40 min at room temperature. Acquisition of 20,000 events was performed.