

bs-7773R**[Primary Antibody]****SPECC1L Rabbit pAb****Bioss**
ANTIBODIES

www.bioss.com.cn

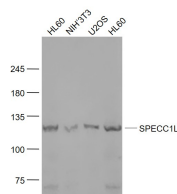
sales@bioss.com.cn

techsupport@bioss.com.cn

400-901-9800

— DATASHEET —

| | | |
|--|----------------------|---|
| Host: Rabbit | Isotype: IgG | Applications: WB (1:500-2000) |
| Clonality: Polyclonal | | Reactivity: Human, Mouse (predicted: Rat, Rabbit, Pig, Sheep, Cow, Chicken, Dog, Horse) |
| GeneID: 23384 | SWISS: Q69YQ0 | Predicted MW.: 125 kDa |
| Target: SPECC1L | | Subcellular Location: Cell membrane ,Cytoplasm |
| Immunogen: KLH conjugated synthetic peptide derived from human SPECC1L: 161-260/1117. | | |
| Purification: affinity purified by Protein A | | |
| Concentration: 1mg/ml | | |
| Storage: 0.01M TBS (pH7.4) with 1% BSA, 0.02% Proclin300 and 50% Glycerol. Shipped at 4°C. Store at -20°C for one year. Avoid repeated freeze/thaw cycles. | | |
| Background: This gene encodes a coiled-coil domain containing protein. The encoded protein may play a critical role in actin-cytoskeletal reorganization during facial morphogenesis. Mutations in this gene are a cause of oblique facial clefting-1. Alternatively spliced transcript variants encoding multiple isoforms have been observed for this gene. A read-through transcript composed of SPECC1L (sperm antigen with calponin homology and coiled-coil domains 1-like) and the downstream ADORA2A (adenosine A2a receptor) gene sequence has been identified, but it is thought to be non-coding. [provided by RefSeq, Jun 2013] | | |

— VALIDATION IMAGES —

Sample: HL60(Human) Cell Lysate at 30 ug
NIH/3T3(Mouse) Cell Lysate at 30 ug
U2OS(Human) Cell Lysate at 30 ug
HL60(Human) Cell Lysate at 30 ug
Primary: Anti-SPECC1L (bs-7773R) at 1/1000 dilution
Secondary: IRDye800CW Goat Anti-Rabbit IgG at 1/20000 dilution
Predicted band size: 125 kD
Observed band size: 125 kD