

**bs-7770R**

**[ Primary Antibody ]**

## SEPT10 Rabbit pAb

**Bioss**  
ANTIBODIES

www.bioss.com.cn

sales@bioss.com.cn

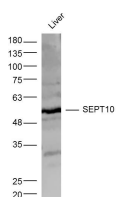
techsupport@bioss.com.cn

400-901-9800

### — DATASHEET —

<b>Host:</b> Rabbit	<b>Isotype:</b> IgG	<b>Applications:</b> WB (1:500-2000)
<b>Clonality:</b> Polyclonal		
<b>GeneID:</b> 151011	<b>SWISS:</b> Q9P0V9	
<b>Target:</b> SEPT10		
<b>Immunogen:</b> KLH conjugated synthetic peptide derived from human SEPT10: 121-220/454.		
<b>Purification:</b> affinity purified by Protein A		
<b>Concentration:</b> 1mg/ml		
<b>Storage:</b> 0.01M TBS (pH7.4) with 1% BSA, 0.02% Proclin300 and 50% Glycerol. Shipped at 4°C. Store at -20°C for one year. Avoid repeated freeze/thaw cycles.		<b>Reactivity:</b> Mouse (predicted: Human, Rat, Rabbit, Pig, Chicken, Horse)
<b>Background:</b> The SEPT10 gene encodes a member of the septin family of cytoskeletal proteins which have GTPase activity. This protein localizes to the cytoplasm and nucleus and displays GTP-binding and GTPase activity. Alternate splicing results in two transcript variants encoding different isoforms.		<b>Predicted MW.:</b> 53 kDa
		<b>Subcellular Location:</b> Cytoplasm

### — VALIDATION IMAGES —



Sample: Liver (Mouse) Lysate at 40 ug Primary:

Anti- SEPT10 (bs-7770R) at 1/300 dilution

Secondary: IRDye800CW Goat Anti-Rabbit IgG at

1/20000 dilution Predicted band size: 53 kD

Observed band size: 53 kD