

bs-15375R**[Primary Antibody]****GPR113 Rabbit pAb****BioSS**
ANTIBODIES

www.bioss.com.cn

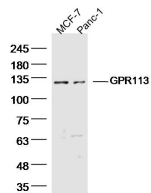
sales@bioss.com.cn

techsupport@bioss.com.cn

400-901-9800

— DATASHEET —

Host: Rabbit	Isotype: IgG	Applications: WB (1:500-2000)
Clonality: Polyclonal		Reactivity: Human
GeneID: 165082	SWISS: Q8IZF5	
Target: GPR113		
Immunogen: KLH conjugated synthetic peptide derived from human GPR113: 1-100/1079. < Extracellular >		Predicted MW.: 114 kDa
Purification: affinity purified by Protein A		Subcellular Location: Cell membrane
Concentration: 1mg/ml		
Storage: 0.01M TBS (pH7.4) with 1% BSA, 0.02% Proclin300 and 50% Glycerol. Shipped at 4°C. Store at -20°C for one year. Avoid repeated freeze/thaw cycles.		
Background: GPR113 (G protein-coupled receptor 113), also known as PGR23 (G-protein coupled receptor PGR23), is a 1,079 amino acid multi-pass membrane protein that belongs to the G-protein coupled receptor 2 family and LN-TM7 subfamily. Localizing to cell membrane and containing one GPS domain, GPR113 may function as an orphan receptor. GPR113 exists as two isoforms due to alternative splicing events.		

— VALIDATION IMAGES —

Sample: MCF-7 Cell (Human) Lysate at 40 ug
Panc-1 Cell (Human) Lysate at 40 ug Primary:
Anti- GPR113 (bs-15375R) at 1/300 dilution
Secondary: IRDye800CW Goat Anti-Rabbit IgG at
1/20000 dilution Predicted band size: 114 kD
Observed band size: 120 kD