

**bs-2854R****[ Primary Antibody ]****Bioss**  
ANTIBODIES

www.bioss.com.cn

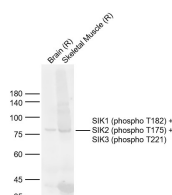
sales@bioss.com.cn

techsupport@bioss.com.cn

400-901-9800

**SIK1 (phospho T182) + SIK2 (phospho T175) + SIK3 (phospho T221) Rabbit pAb****— DATASHEET —**

<b>Host:</b> Rabbit	<b>Isotype:</b> IgG	<b>Applications:</b> WB (1:500-2000)
<b>Clonality:</b> Polyclonal	<b>GeneID:</b> 150094	
<b>Target:</b> SIK1 (phospho T182) + SIK2 (phospho T175) + SIK3 (phospho T221)		
<b>Purification:</b> affinity purified by Protein A		
<b>Concentration:</b> 1mg/ml		
<b>Storage:</b> 0.01M TBS (pH7.4) with 1% BSA, 0.02% Proclin300 and 50% Glycerol. Shipped at 4°C. Store at -20°C for one year. Avoid repeated freeze/thaw cycles.		<b>Reactivity:</b> Rat (predicted: Human, Mouse, Pig, Cow, Chicken, Dog, Horse)
<b>Background:</b> Transient role during the earliest stages of myocardial cell differentiation and/or primitive chamber formation and may also be important for the earliest stages of skeletal muscle growth and/or differentiation. Potential role in G2/M cell cycle regulation. Inhibits CREB activity by phosphorylating and repressing the CREB-specific coactivators, CRTCL-3.		<b>Predicted MW:</b> 85 kDa
		<b>Subcellular Location:</b> Cytoplasm ,Nucleus

**— VALIDATION IMAGES —**

Sample: Lane 1: Rat Brain Lysates Lane 2: Rat Skeletal Muscle Lysates  
Primary: Anti-SIK1 (phospho T182) + SIK2 (phospho T175) + SIK3 (phospho T221) (bs-2854R) at 1/1000 dilution  
Secondary: IRDye800CW Goat Anti-Rabbit IgG at 1/20000 dilution  
Predicted band size: 85kDa  
Observed band size: 85kDa