

**bs-2872R****[ Primary Antibody ]****SPHK2 Rabbit pAb****Bioss**  
**ANTIBODIES**

www.bioss.com.cn

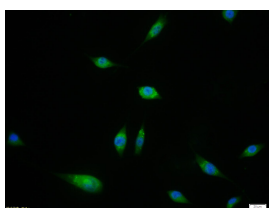
sales@bioss.com.cn

techsupport@bioss.com.cn

400-901-9800

**— DATASHEET —**

|                                                                                                                                                                                                                                                                                                                                                                                                                                                                                                                                                                                                                        |                      |                                                                |
|------------------------------------------------------------------------------------------------------------------------------------------------------------------------------------------------------------------------------------------------------------------------------------------------------------------------------------------------------------------------------------------------------------------------------------------------------------------------------------------------------------------------------------------------------------------------------------------------------------------------|----------------------|----------------------------------------------------------------|
| <b>Host:</b> Rabbit                                                                                                                                                                                                                                                                                                                                                                                                                                                                                                                                                                                                    | <b>Isotype:</b> IgG  | <b>Applications:</b> ICC/IF (1:100-500)                        |
| <b>Clonality:</b> Polyclonal                                                                                                                                                                                                                                                                                                                                                                                                                                                                                                                                                                                           |                      | <b>Reactivity:</b> Human (predicted: Mouse, Rat)               |
| <b>GeneID:</b> 56848                                                                                                                                                                                                                                                                                                                                                                                                                                                                                                                                                                                                   | <b>SWISS:</b> Q9NRA0 |                                                                |
| <b>Target:</b> SPHK2                                                                                                                                                                                                                                                                                                                                                                                                                                                                                                                                                                                                   |                      | <b>Predicted MW.:</b> 72 kDa                                   |
| <b>Immunogen:</b> KLH conjugated synthetic peptide derived from human SPHK2 : 101-200/654 .                                                                                                                                                                                                                                                                                                                                                                                                                                                                                                                            |                      | <b>Subcellular Location:</b> Cell membrane ,Cytoplasm ,Nucleus |
| <b>Purification:</b> affinity purified by Protein A                                                                                                                                                                                                                                                                                                                                                                                                                                                                                                                                                                    |                      |                                                                |
| <b>Concentration:</b> 1mg/ml                                                                                                                                                                                                                                                                                                                                                                                                                                                                                                                                                                                           |                      |                                                                |
| <b>Storage:</b> 0.01M TBS (pH7.4) with 1% BSA, 0.02% Proclin300 and 50% Glycerol.<br>Shipped at 4°C. Store at -20°C for one year. Avoid repeated freeze/thaw cycles.                                                                                                                                                                                                                                                                                                                                                                                                                                                   |                      |                                                                |
| <b>Background:</b> This gene encodes a kinase that phosphorylates sphingosine into sphingosine-1-phosphate, which is involved in cell differentiation, motility, and apoptosis. The encoded protein plays a role in maintaining cellular levels of sphingosine-1-phosphate. The gene product also enhances apoptosis in different cell types and suppresses cellular proliferation. In mast cells, the encoded protein is necessary for influx of calcium, protein kinase C activation, and cytokine production and degranulation. Alternative splicing results in multiple transcript variants. [provided by RefSeq]. |                      |                                                                |

**— VALIDATION IMAGES —**

SH-SY5Y cell; 4% Paraformaldehyde-fixed; Triton X-100 at room temperature for 20 min; Blocking buffer (normal goat serum, C-0005) at 37°C for 20 min; Antibody incubation with (SPHK2) polyclonal Antibody, Unconjugated (bs-2653R) 1:100, 90 minutes at 37°C; followed by a conjugated Goat Anti-Rabbit IgG antibody at 37°C for 90 minutes, DAPI (blue, C02-04002) was used to stain the cell nuclei.