

bs-13893R

[Primary Antibody]

CHD4 Rabbit pAb

Bioss
ANTIBODIES

www.bioss.com.cn

sales@bioss.com.cn

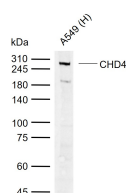
techsupport@bioss.com.cn

400-901-9800

— DATASHEET —

Host: Rabbit	Isotype: IgG	Applications: WB (1:500-2000)
Clonality: Polyclonal		Reactivity: Human (predicted: Mouse, Rat, Rabbit, Pig, Cow, Dog, Horse)
GeneID: 1108	SWISS: Q14839	Predicted MW.: 218 kDa
Target: CHD4		Subcellular Location: Cytoplasm ,Nucleus
Immunogen: KLH conjugated synthetic peptide derived from human CHD4: 21-120/1912.		
Purification: affinity purified by Protein A		
Concentration: 1mg/ml		
Storage: 0.01M TBS (pH7.4) with 1% BSA, 0.02% Proclin300 and 50% Glycerol. Shipped at 4°C. Store at -20°C for one year. Avoid repeated freeze/thaw cycles.		
Background: The product of this gene belongs to the SNF2/RAD54 helicase family. It represents the main component of the nucleosome remodeling and deacetylase complex and plays an important role in epigenetic transcriptional repression. Patients with dermatomyositis develop antibodies against this protein. [provided by RefSeq, Jul 2008]		

— VALIDATION IMAGES —



Sample: Lane 1: Human A549 cell lysates

Primary: Anti-CHD4 (bs-13893R) at 1/500 dilution

Secondary: IRDye800CW Goat Anti-Rabbit IgG at

1/20000 dilution Predicted band size: 218 kDa

Observed band size: 280 kDa