

[Primary Antibody]

PINK1 Mouse mAb

BioSS
ANTIBODIES

www.bioss.com.cn

sales@bioass.com.cn

techsupport@bioss.com.cn

400-901-9800

— DATASHEET

Host: Mouse

Isotype: IgG

Applications: WB (1:200-1000)

Clonality: Monoclonal

CloneNo.: 5C6

GeneID: 65018

SWISS: 09BXM7

Target: PINK1

Purification: affinity purified by Protein G

Concentration: 1mg/ml

Storage: 0.01M TBS (pH7.4) with 1% BSA, 0.02% Proclin300 and 50% Glycerol.
Shipped at 4°C. Store at -20°C for one year. Avoid repeated freeze/thaw cycles.

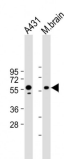
Reactivity: Human

Predicted MW.: 63 kDa

Background: This gene encodes a serine/threonine protein kinase that localizes to mitochondria. It is thought to protect cells from stress-induced mitochondrial dysfunction. Mutations in this gene cause one form of autosomal recessive early-onset Parkinson disease. [provided by RefSeq, Jul 2008]

Subcellular Location: Cytoplasm

— VALIDATION IMAGES



All lanes : Anti-Pink1(115-213) at 1:4000 dilution

Lane 1: A431 whole cell lysate Lane 2: Mouse

brain lysate Lysates/proteins at 20 μ g per lane.

Secondary Goat Anti-mouse IgG, (H+L),

Peroxidase conjugated at 1/10000 dilution.

Predicted band size : 63 kDa Blocking/Dilution

buffer: 5% NFDM/TBST.

— SELECTED CITATIONS

- **[IF=6.025]** Xuliang Zhang. et al. PINK1/Parkin-mediated mitophagy mitigates T-2 toxin-induced nephrotoxicity. FOOD CHEM TOXICOL. 2022 Jun;164:113078 WB ;Mouse. 35489469
- **[IF=6.208]** Chuanling Wang. et al. Berberine Rescues D-Ribose-Induced Alzheimer's Pathology via Promoting Mitophagy. INT J MOL SCI. 2023 Jan;24(6):5896 ICC ;Mouse. 36982968
- **[IF=4.872]** Yajing Wang. et al. Long-term exposure to the fluoride blocks the development of chondrocytes in the ducks: The molecular mechanism of fluoride regulating autophagy and apoptosis. Ecotox Environ Safe. 2021 Jul;217:112225 WB ;Duck. 33864983
- **[IF=4.081]** Zhang, Kai. et al. Long-Term Copper Exposure Induced Excessive Autophagy of the Porcine Spleen. BIOL TRACE ELEM RES. 2022 Jul;:1-9 WB ;Pig. 35794302

Important Note: This product as supplied is intended for research use only, not for use in human, therapeutic or diagnostic applications.