

---

## Notch 2 Rabbit pAb

Catalog Number: bs-21664R

Target Protein: Notch 2

Concentration: 1mg/ml

Form: Liquid

Host: Rabbit

Clonality: Polyclonal

Isotype: IgG

Applications: WB (1:500-2000)

Reactivity: Mouse (predicted:Human, Rat, Dog)

Predicted MW: 262 kDa

Entrez Gene: 4853

Swiss Prot: Q04721

Source: KLH conjugated synthetic peptide derived from human Notch 2: 2070-2170/2471.

Purification: affinity purified by Protein A

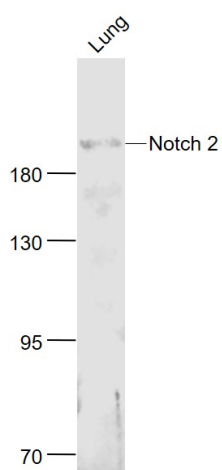
Storage: 0.01M TBS (pH7.4) with 1% BSA, 0.02% Proclin300 and 50% Glycerol.

Shipped at 4°C. Store at -20°C for one year. Avoid repeated freeze/thaw cycles.

**Background:** Functions as a receptor for membrane-bound ligands Jagged1, Jagged2 and Delta1 to regulate cell-fate determination. Upon ligand activation through the released notch intracellular domain (NICD) it forms a transcriptional activator complex with RBPJ/RBPSUH and activates genes of the enhancer of split locus. Affects the implementation of differentiation, proliferation and apoptotic programs.

### VALIDATION IMAGES

---



Sample: Lung (Mouse) Lysate at 40 ug Primary: Anti- Notch 2 (bs-21664R) at 1/1000 dilution Secondary: IRDye800CW Goat Anti-Rabbit IgG at 1/20000 dilution Predicted band size: 262 kD Observed band size: 262 kD

## PRODUCT SPECIFIC PUBLICATIONS

**[IF=5.3]** Xi Chen. et al. SNORA73B promotes endometrial cancer progression through targeting MIB1 and regulating host gene RCC1 alternative splicing. JOURNAL OF CELLULAR AND MOLECULAR MEDICINE. 2023 Jul;; WB ; Human . 37488742