

**bs-6893R****[ Primary Antibody ]****KLLN Rabbit pAb****BioSS**  
**ANTIBODIES**

www.bioss.com.cn

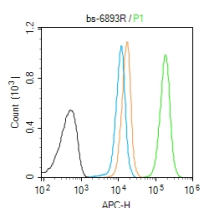
sales@bioss.com.cn

techsupport@bioss.com.cn

400-901-9800

**— DATASHEET —**

<b>Host:</b> Rabbit	<b>Isotype:</b> IgG	<b>Applications:</b> Flow-Cyt (1ug/Test)
<b>Clonality:</b> Polyclonal		
<b>GeneID:</b> 100144748	<b>SWISS:</b> B2CW77	
<b>Target:</b> KLLN		
<b>Immunogen:</b> KLH conjugated synthetic peptide derived from human KLLN: 20-120/178.		
<b>Purification:</b> affinity purified by Protein A		<b>Reactivity:</b> Human
<b>Concentration:</b> 1mg/ml		
<b>Storage:</b> 0.01M TBS (pH7.4) with 1% BSA, 0.02% Proclin300 and 50% Glycerol. Shipped at 4°C. Store at -20°C for one year. Avoid repeated freeze/thaw cycles.		<b>Predicted MW.:</b> 20 kDa
<b>Background:</b> DNA-binding protein involved in S phase checkpoint control-coupled apoptosis by mediating p53/TP53-induced apoptosis. Has the ability to inhibit DNA synthesis and S phase arrest coupled to apoptosis. Has affinity to both double- and single-stranded DNA.		<b>Subcellular Location:</b> Nucleus

**— VALIDATION IMAGES —**

Blank control (Black line): Molt4 (Black). Primary Antibody (green line): Rabbit Anti-KLLN antibody (bs-6893R) Dilution: 1µg / 10<sup>6</sup> cells; Isotype Control Antibody (orange line): Rabbit IgG. Secondary Antibody (white blue line): Goat anti-rabbit IgG-AF647 Dilution: 1µg / test. Protocol The cells were fixed with 4% PFA (10min at room temperature) and then permeabilized with 90% ice-cold methanol for 20 min at room temperature. The cells were then incubated in 5% BSA to block non-specific protein-protein interactions for 30 min at room temperature. Cells stained with Primary Antibody for 30 min at room temperature. The secondary antibody used for 40 min at room temperature. Acquisition of 20,000 events was performed.