

bs-5127R**[Primary Antibody]****BioSS**
ANTIBODIES

www.bioss.com.cn

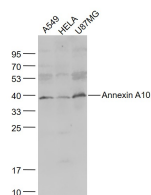
sales@bioss.com.cn

techsupport@bioss.com.cn

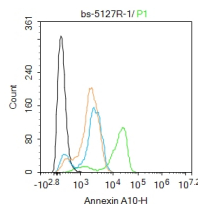
400-901-9800

Annexin A10 Rabbit pAb**— DATASHEET —**

Host: Rabbit	Isotype: IgG	Applications: WB (1:500-2000) Flow-Cyt (1ug/Test)
Clonality: Polyclonal		Reactivity: Human (predicted: Mouse, Rat, Cow, Dog, Horse)
GeneID: 11199	SWISS: Q9UJ72	
Target: Annexin A10		
Immunogen: KLH conjugated synthetic peptide derived from human Annexin A10: 251-324/324.		
Purification: affinity purified by Protein A		
Concentration: 1mg/ml		Predicted MW.: 37 kDa
Storage: 0.01M TBS (pH7.4) with 1% BSA, 0.02% Proclin300 and 50% Glycerol. Shipped at 4°C. Store at -20°C for one year. Avoid repeated freeze/thaw cycles.		Subcellular Location: Nucleus
Background: Members of this calcium-dependent phospholipid-binding protein family play a role in the regulation of cellular growth and in signal transduction pathways. The function of this gene has not yet been determined.		

— VALIDATION IMAGES —

Sample: A549(Human) Cell Lysate at 30 ug
 HeLa(Human) Cell Lysate at 30 ug
 U87MG(Human) Cell Lysate at 30 ug
 Primary: Anti-Annexin A10 (bs-5127R) at 1/1000 dilution
 Secondary: IRDye800CW Goat Anti-Rabbit IgG at 1/20000 dilution
 Predicted band size: 37 kD
 Observed band size: 37 kD



Blank control: A549. Primary Antibody (green line): Rabbit Anti-Annexin A10 antibody (bs-5127R) Dilution: 1ug/Test; Secondary Antibody: Goat anti-rabbit IgG-FITC Dilution: 0.5ug/Test. Protocol The cells were fixed with 4% PFA (10min at room temperature) and then permeabilized with 90% ice-cold methanol for 20 min at -20°C. The cells were then incubated in 5% BSA to block non-specific protein-protein interactions for 30 min at room temperature. Cells stained with Primary Antibody for 30 min at room temperature. The secondary antibody used for 40 min at room temperature. Acquisition of 5,000 events was performed.

— SELECTED CITATIONS —

- **[IF=2.11]** Lu, Ying, et al. "Annexin A10 is involved in the development and maintenance of neuropathic pain in mice." Neuroscience Letters (2016). WB,IHC ;Mouse. 27507697