

bs-5118R**[Primary Antibody]****TUBA1C Rabbit pAb****Bioss**
ANTIBODIES

www.bioss.com.cn

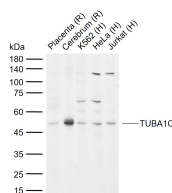
sales@bioss.com.cn

techsupport@bioss.com.cn

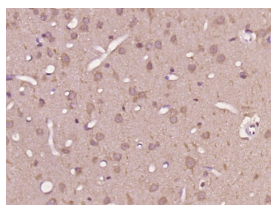
400-901-9800

— DATASHEET —**Host:** Rabbit**Isotype:** IgG**Clonality:** Polyclonal**GeneID:** 84790**SWISS:** Q9BQE3**Target:** TUBA1C**Immunogen:** KLH conjugated synthetic peptide derived from human Tubulin alpha 6: 51-150/449.**Purification:** affinity purified by Protein A**Concentration:** 1mg/ml**Storage:** 0.01M TBS (pH7.4) with 1% BSA, 0.02% Proclin300 and 50% Glycerol.

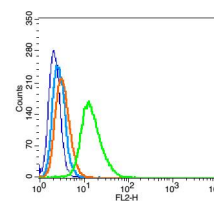
Shipped at 4°C. Store at -20°C for one year. Avoid repeated freeze/thaw cycles.

Background: Tubulin is the major constituent of microtubules. It binds two moles of GTP, one at an exchangeable site on the beta chain and one at a non-exchangeable site on the alpha chain.**Applications:** **WB** (1:500-2000)**IHC-P** (1:100-500)**IHC-F** (1:100-500)**IF** (1:100-500)**Flow-Cyt** (1µg/Test)**Reactivity:** Human, Rat
(predicted: Mouse, Rabbit,
Pig, Cow, Dog, Horse)**Predicted
MW.:** 49 kDa**Subcellular
Location:** Cytoplasm**— VALIDATION IMAGES —**

Sample: Lane 1: Rat Placenta tissue lysates Lane 2: Rat Cerebrum tissue lysates Lane 3: Human K562 cell lysates Lane 4: Human HeLa cell lysates Lane 5: Human Jurkat cell lysates
Primary: Anti-TUBA1C (bs-5118R) at 1/1000 dilution Secondary: IRDye800CW Goat Anti-Rabbit IgG at 1/20000 dilution Predicted band size: 49 kDa Observed band size: 50 kDa



Paraformaldehyde-fixed, paraffin embedded (rat brain tissue); Antigen retrieval by boiling in sodium citrate buffer (pH6.0) for 15min; Block endogenous peroxidase by 3% hydrogen peroxide for 20 minutes; Blocking buffer (normal goat serum) at 37°C for 30min; Antibody incubation with (TUBA1C) Polyclonal Antibody, Unconjugated (bs-5118R) at 1:400 overnight at 4°C, followed by operating according to SP Kit(Rabbit) (sp-0023) instructions and DAB staining.



Blank control(blue): RSC96 (fixed with 2% paraformaldehyde (10 min), then permeabilized with 90% ice-cold methanol for 30 min on ice). Primary Antibody: Rabbit Anti- TUBA1C antibody(bs-5118R), Dilution: 1µg in 100 µL 1X PBS containing 0.5% BSA; Isotype Control Antibody: Rabbit IgG(orange), used under the same conditions; Secondary Antibody: Goat anti-rabbit IgG-PE(white blue), Dilution: 1:200 in 1 X PBS containing 0.5% BSA.