

bs-5115R**[Primary Antibody]**

Cytochrome b5 Rabbit pAb

Bioss
ANTIBODIES

www.bioss.com.cn

sales@bioss.com.cn

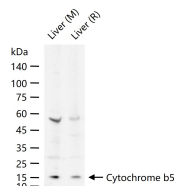
techsupport@bioss.com.cn

400-901-9800

— DATASHEET —

| | | |
|---|----------------------|---|
| Host: Rabbit | Isotype: IgG | Applications: WB (1:500-2000) |
| Clonality: Polyclonal | | |
| GeneID: 1528 | SWISS: P00167 | |
| Target: Cytochrome b5 | | |
| Immunogen: KLH conjugated synthetic peptide derived from human Cytochrome b5: 9-80/134. | | |
| Purification: affinity purified by Protein A | | Reactivity: Mouse, Rat (predicted: Human, Pig, Sheep, Cow, Dog) |
| Concentration: 1mg/ml | | Predicted MW.: 15 kDa |
| Storage: 0.01M TBS (pH7.4) with 1% BSA, 0.02% Proclin300 and 50% Glycerol. Shipped at 4°C. Store at -20°C for one year. Avoid repeated freeze/thaw cycles. | | Subcellular Location: Cell membrane ,Cytoplasm |
| Background: The protein encoded by this gene is a membrane-bound cytochrome that reduces ferric hemoglobin (methemoglobin) to ferrous hemoglobin, which is required for stearyl-CoA-desaturase activity. Defects in this gene are a cause of type IV hereditary methemoglobinemia. Three transcript variants encoding different isoforms have been found for this gene. [provided by RefSeq, Jun 2010] | | |

— VALIDATION IMAGES —



25 ug total protein per lane of various lysates (see on figure) probed with Cytochrome b5 polyclonal antibody, unconjugated (bs-5115R) at 1:500 dilution and 4°C overnight incubation. Followed by conjugated secondary antibody incubation at r.t. for 60 min.