

bs-5113R

[Primary Antibody]

Bioss
ANTIBODIES

www.bioss.com.cn

sales@bioss.com.cn

techsupport@bioss.com.cn

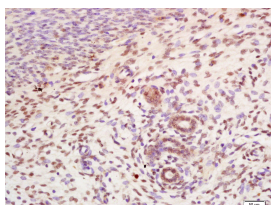
400-901-9800

CDCA4 Rabbit pAb

— DATASHEET —

Host: Rabbit	Isotype: IgG	Applications: IHC-P (1:100-500) IHC-F (1:100-500) IF (1:100-500) Reactivity: Rat (predicted: Human, Mouse, Pig, Cow, Chicken, Dog, Horse) Predicted MW.: 26 kDa Subcellular Location: Nucleus
Clonality: Polyclonal		
GeneID: 55038	SWISS: Q9BXL8	
Target: CDCA4		
Immunogen: KLH conjugated synthetic peptide derived from human CDCA4: 21-120/241.		
Purification: affinity purified by Protein A		
Concentration: 1mg/ml		
Storage: 0.01M TBS (pH7.4) with 1% BSA, 0.02% Proclin300 and 50% Glycerol. Shipped at 4°C. Store at -20°C for one year. Avoid repeated freeze/thaw cycles.		
Background: CDCA4 is a protein that belongs to the E2F family of transcription factors. This protein regulates E2F-dependent transcriptional activation and cell proliferation, mainly through the E2F/retinoblastoma protein pathway. It also functions in the regulation of JUN oncogene expression. This protein shows distinctive nuclear-mitotic apparatus distribution, it is involved in spindle organization from prometaphase, and may also play a role as a midzone factor involved in chromosome segregation or cytokinesis. Two alternatively spliced transcript variants encoding the same protein have been noted for this gene. Two pseudogenes have also been identified on chromosome 1.		

— VALIDATION IMAGES —



Tissue/cell: rat uterus tissue; 4% Paraformaldehyde-fixed and paraffin-embedded; Antigen retrieval: citrate buffer (0.01M, pH 6.0), Boiling bathing for 15min; Block endogenous peroxidase by 3% Hydrogen peroxide for 30min; Blocking buffer (normal goat serum, C-0005) at 37°C for 20 min; Incubation: Anti-CDCA4 Polyclonal Antibody, Unconjugated(bs-5113R) 1:200, overnight at 4°C, followed by conjugation to the secondary antibody(SP-0023) and DAB(C-0010) staining

— SELECTED CITATIONS —

- **[IF=2.9]** Wei Ding. et al. Roles of the CDCA gene family in breast carcinoma. SCI PROGRESS-UK. ;(): WB,IHC ;Human. 39814554