

bs-10071R**[Primary Antibody]****VEGFB167 Rabbit pAb****Bioss**
ANTIBODIES

www.bioss.com.cn

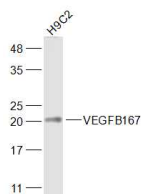
sales@bioss.com.cn

techsupport@bioss.com.cn

400-901-9800

— DATASHEET —

Host: Rabbit	Isotype: IgG	Applications: WB (1:500-2000)
Clonality: Polyclonal		Reactivity: Rat (predicted: Human, Mouse, Pig, Cow, GuineaPig, Horse)
GeneID: 7423	SWISS: P49765	Predicted MW.: 22 kDa
Target: VEGFB167		Subcellular Location: Secreted ,Extracellular matrix
Immunogen: KLH conjugated synthetic peptide derived from human VEGFB isoform VEGFB-167: 121-188/188.		
Purification: affinity purified by Protein A		
Concentration: 1mg/ml		
Storage: 0.01M TBS (pH7.4) with 1% BSA, 0.02% Proclin300 and 50% Glycerol. Shipped at 4°C. Store at -20°C for one year. Avoid repeated freeze/thaw cycles.		
Background: The onset of angiogenesis is believed to be an early event in tumorigenesis and may facilitate tumor progression and metastasis. Several growth factors with angiogenic activity have been described and include fibroblast growth factor (FGF), platelet derived growth factor (PDGF) and vascular endothelial growth factors (VEGFs). The VEGF protein family is comprised of VEGF, VEGF-B, VEGF-C and VEGF-D, all of which may exhibit angiogenic function in vivo. VEGF-B, which exists as two alternatively spliced isoforms known as VEGF-B167 and VEGF-B186, is abundantly expressed in heart and skeletal muscle and is frequently co-expressed with VEGF. VEGF-C binds to and specifically activates Flt-4 and Flk-1.		

— VALIDATION IMAGES —

Sample: H9C2(Rat) Cell Lysate at 30 ug Primary:

Anti-VEGFB167 (bs-10071R) at 1/1000 dilution

Secondary: IRDye800CW Goat Anti-Rabbit IgG at

1/20000 dilution Predicted band size: 22 kD

Observed band size: 21 kD