

bs-10339R**[Primary Antibody]**

Bioss
ANTIBODIES

www.bioss.com.cn

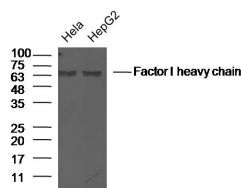
sales@bioss.com.cn

techsupport@bioss.com.cn

400-901-9800

Factor I heavy chain Rabbit pAb**— DATASHEET —**

Host: Rabbit Clonality: Polyclonal GeneID: 3426 Target: Factor I heavy chain Immunogen: KLH conjugated synthetic peptide derived from human Complement factor I heavy chain: 261-360/582. Purification: affinity purified by Protein A Concentration: 1mg/ml Storage: 0.01M TBS (pH7.4) with 1% BSA, 0.02% Proclin300 and 50% Glycerol. Shipped at 4°C. Store at -20°C for one year. Avoid repeated freeze/thaw cycles. Background: The complement pathway is an important host defense system that contributes to both innate and acquired immunity. There are three pathways of complement activation: the classical pathway, lectin pathway and alternative pathway. Complement protein Factor I is a key serine protease that modulates the complement cascade by regulating the levels of C3 convertases. It circulates in plasma as a heavily N-glycosylated heterodimer made up of two disulfide linked chains, each carrying three N-linked oligosaccharide chains that may have both structural and functional roles in the interactions with the natural substrate and the cofactor during catalysis. Factor I is a serine protease with a high degree of specificity for C3b and C4b. It requires protein cofactors for cleavage of these complement proteins; Factor H, CR1 or MCP are required for C3b cleavage, and C4bp or CR1 are required for C4b cleavage.	Isotype: IgG SWISS: P05156 Applications: WB (1:500-2000) Reactivity: Human (predicted: Mouse, Rat) Predicted MW.: 35/63 kDa Subcellular Location: Secreted ,Extracellular matrix
--	---

— VALIDATION IMAGES —

Protein: Hela(human)cell lyates at 30ug;
 HepG2(human)cell lyates at 30ug; Primary:
 Rabbit Anti-Factor I heavy chain(bs-10339R) at
 1:300; Secondary: 800CW Conjugated
 Goat(polyclonal) Anti-Rabbit IgG(H+L) at 1:
 10000; Predicted band size:39/63 kD Observed
 band size:63 kD