

bs-10645R**[Primary Antibody]****Complement component C9b Rabbit pAb****BioSS**
ANTIBODIES

www.bioss.com.cn

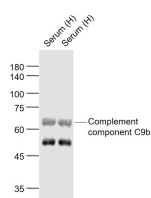
sales@bioss.com.cn

techsupport@bioss.com.cn

400-901-9800

— DATASHEET —

Host: Rabbit Clonality: Polyclonal GeneID: 735 Target: Complement component C9b Immunogen: KLH conjugated synthetic peptide derived from human Complement component C9b: 221-320/559. Purification: affinity purified by Protein A Concentration: 1mg/ml Storage: 0.01M TBS (pH7.4) with 1% BSA, 0.02% Proclin300 and 50% Glycerol. Shipped at 4°C. Store at -20°C for one year. Avoid repeated freeze/thaw cycles. Background: C9 is a plasma protein synthesized in the liver and monocytes consisting of a single polypeptide chain. C9 is a part of the membrane attack complex (MAC), an important component of the immune system. The MAC forms upon complement system activation by invading pathogenic bacteria and consists of the four major complement proteins: C5b, C6, C7 and C8. These complement proteins bind to the outer surface of the plasma membrane of the invading cell. C9 binds to the membrane associated C5b-8 protein, which leads to the circular polymerization of 12-18 C9 molecules. These polymerized C9 molecules form a ring structure in the membrane. Molecules can then diffuse freely through this transmembrane channel, causing cell lysis and destruction of the invading bacterial cell.	Isotype: IgG SWISS: P02748 Applications: WB (1:500-2000) Reactivity: Human Predicted MW.: 32/57 kDa Subcellular Location: Secreted ,Cell membrane
--	--

— VALIDATION IMAGES —

Sample: Lane 1: Serum (Human) at 40 ug Lane 2:
Serum (Human) at 40 ug Primary: Anti-
Complement component C9b (bs-10645R) at
1/1000 dilution Secondary: IRDye800CW Goat
Anti-Rabbit IgG at 1/20000 dilution Predicted
band size: 66 kD Observed band size: 66 kD