

FGFBP2 Rabbit pAb

Catalog Number: bs-11284R

Target Protein: FGFBP2

Concentration: 1mg/ml

Form: Liquid

Host: Rabbit

Clonality: Polyclonal

Isotype: IgG

Applications: IHC-P (1:100-500), IHC-F (1:100-500), IF (1:100-500)

Reactivity: Human

Predicted MW: 23 kDa

Entrez Gene: 83888

Swiss Prot: Q9BYJ0

Source: KLH conjugated synthetic peptide derived from human FGFBP2/KSP37: 121-220/223.

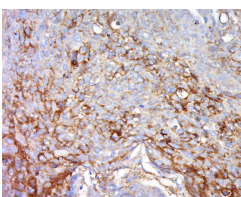
Purification: affinity purified by Protein A

Storage: 0.01M TBS (pH7.4) with 1% BSA, 0.02% Proclin300 and 50% Glycerol.

Shipped at 4°C. Store at -20°C for one year. Avoid repeated freeze/thaw cycles.

Background: KSP37 is a 223 amino acid protein that is secreted into the extracellular space and belongs to the fibroblast growth factor-binding protein family. Expressed in serum, as well as in cytotoxic T lymphocytes and peripheral leukocytes, KSP37 is thought to be involved in lymphocyte-mediated immunity, possibly playing a role in the development of asthma. The gene encoding KSP37 maps to human chromosome 4, which encodes nearly 6% of the human genome and has the largest gene deserts (regions of the genome with no protein encoding genes) of all of the human chromosomes. Defects in some of the genes located on chromosome 4 are associated with Huntington's disease, Ellis-van Creveld syndrome, methylmalonic acidemia and polycystic kidney disease.

VALIDATION IMAGES



Tissue/cell: human lung carcinoma; 4% Paraformaldehyde-fixed and paraffin-embedded; Antigen retrieval: citrate buffer (0.01M, pH 6.0), Boiling bathing for 15min; Block endogenous peroxidase by 3% Hydrogen peroxide for 30min; Blocking buffer (normal goat serum,C-0005) at 37°C for 20 min; Incubation: Anti-FGFBP2 Polyclonal Antibody, Unconjugated(bs-R) 1:500, overnight at 4°C, followed by conjugation to the secondary antibody(SP-0023) and DAB(C-0010) staining