

bs-3341R**[Primary Antibody]****phospho-PLCB3 (Ser1105) Rabbit pAb****BioSS**
ANTIBODIES

www.bioss.com.cn

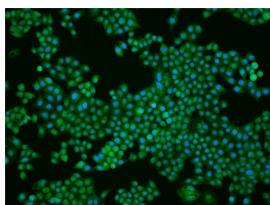
sales@bioss.com.cn

techsupport@bioss.com.cn

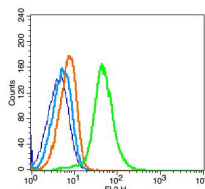
400-901-9800

— DATASHEET —

Host: Rabbit	Isotype: IgG	Applications: Flow-Cyt (1µg /Test) ICC/IF (1:50)
Clonality: Polyclonal		
GeneID: 5331	SWISS: Q01970	Reactivity: Human (predicted: Mouse, Rat, Pig, Cow, Dog, Horse)
Target: PLCB3 (Ser1105)		
Immunogen: KLH conjugated synthesised phosphopeptide derived from human PLC beta3 around the phosphorylation site of Ser1105: N(p-S)ISE.		
Purification: affinity purified by Protein A		Predicted MW.: 136 kDa
Concentration: 1mg/ml		Subcellular Location: Cell membrane
Storage: 0.01M TBS (pH7.4) with 1% BSA, 0.02% Proclin300 and 50% Glycerol. Shipped at 4°C. Store at -20°C for one year. Avoid repeated freeze/thaw cycles.		
Background: The protein encoded by this gene catalyzes the formation of inositol 1,4,5-trisphosphate and diacylglycerol from phosphatidylinositol 4,5-bisphosphate. This reaction uses calcium as a cofactor and plays an important role in the intracellular transduction of receptor-mediated tyrosine kinase activators. For example, when activated by SRC, the encoded protein causes the Ras guanine nucleotide exchange factor RasGRP1 to translocate to the Golgi, where it activates Ras. Also, this protein has been shown to be a major substrate for heparin-binding growth factor 1 (acidic fibroblast growth factor)-activated tyrosine kinase. Two transcript variants encoding different isoforms have been found for this gene.		

— VALIDATION IMAGES —

MCF-7 cell; 4% Paraformaldehyde-fixed; Triton X-100 at room temperature for 20 min; Blocking buffer (normal goat serum, C-0005) at 37°C for 20 min; Antibody incubation with (Phospho-PLC beta3 (Ser1105)) polyclonal Antibody, Unconjugated (bs-3341R) 1:50, 90 minutes at 37°C; followed by a conjugated Goat Anti-Rabbit IgG antibody at 37°C for 90 minutes, DAPI (blue, C02-04002) was used to stain the cell nuclei.



Blank control(blue): RAJI(fixed with 2% paraformaldehyde (10 min)). Primary Antibody:Rabbit Anti-Phospho-PLC beta3 (Ser1105) antibody(bs-3341R), Dilution: 1µg in 100 µL 1X PBS containing 0.5% BSA; Isotype Control Antibody: Rabbit IgG(orange) ,used under the same conditions); Secondary Antibody: Goat anti-rabbit IgG-PE(white blue), Dilution: 1:200 in 1 X PBS containing 0.5% BSA.

— SELECTED CITATIONS —

- **[IF=16.6]** Ding Yangyang. et al. MTH1 protects platelet mitochondria from oxidative damage and regulates platelet function and thrombosis. NAT COMMUN. 2023 Aug;14(1):1-15 WB ;Mouse. 37563135