

IL22BP Rabbit pAb

Catalog Number: bs-2625R

Target Protein: IL22BP

Concentration: 1mg/ml

Form: Liquid

Host: Rabbit

Clonality: Polyclonal

Isotype: IgG

Applications: WB (1:500-2000)

Reactivity: Mouse, Rat

Predicted MW: 28(hu)/25(mo, ra kDa

Entrez Gene: 116379

Swiss Prot: Q969J5

Source: KLH conjugated synthetic peptide derived from human IL-22BP: 165-263/263.

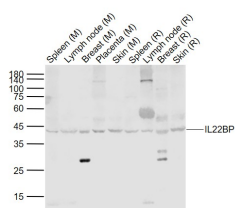
Purification: affinity purified by Protein A

Storage: 0.01M TBS (pH7.4) with 1% BSA, 0.02% Proclin300 and 50% Glycerol.

Shipped at 4°C. Store at -20°C for one year. Avoid repeated freeze/thaw cycles.

Background: There are two isoforms of IL22 RA2 produce by alternative splicing. Isoform 1 may play a role in establishing and maintaining successful pregnancy. Isoform 2 is a receptor for IL22. Binds to IL22, prevents interaction with the functional IL-22R complex and blocks the activity of IL22 (in vitro). It may play an important role as an IL22 antagonist in the regulation of inflammatory responses.

VALIDATION IMAGES



Sample: Lane 1: Spleen (Mouse) Lysate at 40 ug Lane 2: Lymph node (Mouse) Lysate at 40 ug Lane 3: Breast (Mouse) Lysate at 40 ug Lane 4: Placenta (Mouse) Lysate at 40 ug Lane 5: Skin (Mouse) Lysate at 40 ug Lane 6: Spleen (Rat) Lysate at 40 ug Lane 7: Lymph node (Rat) Lysate at 40 ug Lane 8: Breast (Rat) Lysate at 40 ug Lane 9: Skin (Rat) Lysate at 40 ug Primary: Anti-IL22BP (bs-2625R) at 1/1000 dilution Secondary: IRDye800CW Goat Anti-Rabbit IgG at 1/20000 dilution Predicted band size: 48/44/28 kD Observed band size: 42 kD

PRODUCT SPECIFIC PUBLICATIONS

[IF=4.087] Wang, Xiaobai. et al. Relationship between IL-22 and IL-22BP in diabetic cognitive dysfunction. ACTA DIABETOL. 2023 Jan;;1-14

WB ; Mouse . 36717397

[IF=0] Almishri, Wagdi. Regulatory Immune-Responses Occurring within the Liver Downstream of Hepatic iNKTcell activation. Diss. University of Calgary, 2015. IHC ; ="Mouse" . Diss.UniversityofCalgary,2015.