
GLYATL1 Rabbit pAb

Catalog Number: bs-13444R

Target Protein: GLYATL1

Concentration: 1mg/ml

Form: Liquid

Host: Rabbit

Clonality: Polyclonal

Isotype: IgG

Applications: WB (1:500-2000)

Reactivity: Human

Predicted MW: 35 kDa

Subcellular: Cytoplasm

Locations:

Entrez Gene: 92292

Swiss Prot: Q969I3

Source: KLH conjugated synthetic peptide derived from human GLYATL1: 101-200/302.

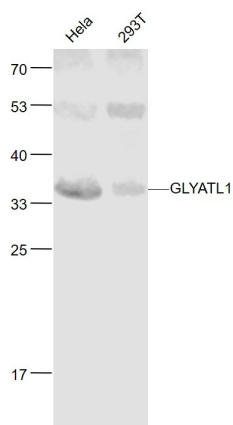
Purification: affinity purified by Protein A

Storage: 0.01M TBS (pH7.4) with 1% BSA, 0.02% Proclin300 and 50% Glycerol.

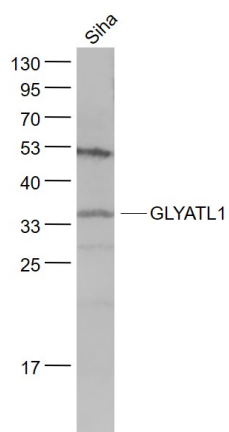
Shipped at 4°C. Store at -20°C for one year. Avoid repeated freeze/thaw cycles.

Background: GLYATL1 is a 302 amino acid mitochondrial acyltransferase that transfers the acyl group to the N-terminus of glycine. GLYATL1 can also conjugate a multitude of substrates to form a variety of N-acylglycines. A member of the glycine N-acyltransferase family, GLYATL1 exists as two alternatively spliced isoforms and is encoded by a gene that maps to human chromosome 11q12.1. Chromosome 11 houses over 1,400 genes and comprises nearly 4% of the human genome. Jervell and Lange-Nielsen syndrome, Jacobsen syndrome, Niemann-Pick disease, hereditary angioedema and Smith-Lemli-Opitz syndrome are associated with defects in genes that maps to chromosome 11.

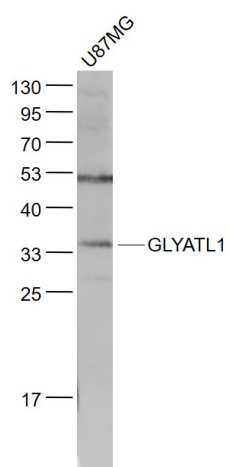
VALIDATION IMAGES



Sample: HeLa(Human) Cell Lysate at 30 ug 293T(Human) Cell Lysate at 30 ug Primary: Anti- GLYATL1 (bs-13444R) at 1/1000 dilution Secondary: IRDye800CW Goat Anti-Rabbit IgG at 1/20000 dilution Predicted band size: 35 kD Observed band size: 35 kD



Sample: SiHa(Human) Cell Lysate at 30 ug Primary: Anti- GLYATL1 (bs-13444R) at 1/1000 dilution Secondary: IRDye800CW Goat Anti-Rabbit IgG at 1/20000 dilution Predicted band size: 35 kD Observed band size: 35 kD



Sample: U87MG(Human) Cell Lysate at 30 ug Primary: Anti- GLYATL1 (bs-13444R) at 1/1000 dilution Secondary: IRDye800CW Goat Anti-Rabbit IgG at 1/20000 dilution Predicted band size: 35 kD Observed band size: 35 kD