

bs-2610R**[Primary Antibody]****IL17RB Rabbit pAb****BioSS**
ANTIBODIES

www.bioss.com.cn

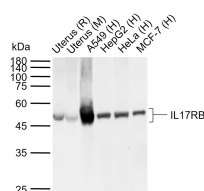
sales@bioss.com.cn

techsupport@bioss.com.cn

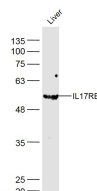
400-901-9800

DATASHEET

Host: Rabbit	Isotype: IgG	Applications: WB (1:500-2000) ELISA (1:5000-10000)
Clonality: Polyclonal		Reactivity: Human, Mouse, Rat
GeneID: 55540	SWISS: Q9NRM6	
Target: IL17RB		
Immunogen: KLH conjugated synthetic peptide derived from human IL-17RB: 221-320/502. < Cytoplasmic >		
Purification: affinity purified by Protein A		
Concentration: 1mg/ml		
Storage: 0.01M TBS (pH7.4) with 1% BSA, 0.02% Proclin300 and 50% Glycerol. Shipped at 4°C. Store at -20°C for one year. Avoid repeated freeze/thaw cycles.		
Background: The protein encoded by this gene is a cytokine receptor. This receptor specifically binds to IL17B and IL17E, but does not bind to IL17 and IL17C. This receptor has been shown to mediate the activation of NF-kappaB and the production of IL8 induced by IL17E. The expression of the rat counterpart of this gene was found to be significantly up-regulated during intestinal inflammation, which suggested the immunoregulatory activity of this receptor. [provided by RefSeq].		
		Predicted MW.: 54 kDa
		Subcellular Location: Secreted ,Cell membrane

VALIDATION IMAGES

Sample: Lane 1: Rat Uterus tissue lysates Lane 2: Mouse Uterus tissue lysates Lane 3: Human A549 cell lysates Lane 4: Human HepG2 cell lysates Lane 5: Human HeLa cell lysates Lane 6: Human MCF-7 cell lysates Primary: Anti-IL17RB (bs-2610R) at 1/1000 dilution Secondary: IRDye800CW Goat Anti-Rabbit IgG at 1/20000 dilution Predicted band size: 54 kDa Observed band size: 50 kDa



Sample: Liver (Mouse) Lysate at 40 ug Primary: Anti-IL17RB (bs-2610R) at 1/300 dilution Secondary: IRDye800CW Goat Anti-Rabbit IgG at 1/20000 dilution Predicted band size: 54 kD Observed band size: 54 kD

SELECTED CITATIONS

- **[IF=8.38]** Gregory, Lisa G., et al. "IL-25 drives remodelling in allergic airways disease induced by house dust mite." Thorax 68.1 (2013): 82-90. IHC ;="Mouse". 23093652
- **[IF=3.636]** Kawamura Teruhiko. et al. Identification of genes associated with endometrial cell ageing. Mol Hum Reprod. 2021 Feb;27(2): IHC ;Human. 33258951
- **[IF=1.813]** Xie Dong-ping. et al. Effect of Electroacupuncture at Zusanli (ST36) on Sepsis Induced by Cecal Ligation Puncture and Its Relevance to Spleen. Evid-Based Compl Alt. 2020;2020:1914031 FCM ;Rat. 33082818