

bs-5726R**[Primary Antibody]****BubR1 Rabbit pAb****BioSS**
ANTIBODIES

www.bioss.com.cn

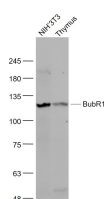
sales@bioss.com.cn

techsupport@bioss.com.cn

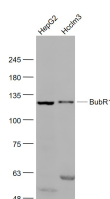
400-901-9800

— DATASHEET —

Host: Rabbit Clonality: Polyclonal GeneID: 701 Target: BubR1 Immunogen: KLH conjugated synthetic peptide derived from human BubR1: 751-850/1050. Purification: affinity purified by Protein A Concentration: 1mg/ml Storage: 0.01M TBS (pH7.4) with 1% BSA, 0.02% Proclin300 and 50% Glycerol. Shipped at 4°C. Store at -20°C for one year. Avoid repeated freeze/thaw cycles. Background: This gene encodes a kinase involved in spindle checkpoint function. The protein has been localized to the kinetochore and plays a role in the inhibition of the anaphase-promoting complex/cyclosome (APC/C), delaying the onset of anaphase and ensuring proper chromosome segregation. Impaired spindle checkpoint function has been found in many forms of cancer. [provided by RefSeq, Jul 2008]	Isotype: IgG SWISS: O60566	Applications: WB (1:500-2000) Reactivity: Human, Mouse (predicted: Rabbit, Cow) Predicted MW.: 120 kDa Subcellular Location: Cytoplasm ,Nucleus
-------------------------------------------------------------------------------------------------------------------------------------------------------------------------------------------------------------------------------------------------------------------------------------------------------------------------------------------------------------------------------------------------------------------------------------------------------------------------------------------------------------------------------------------------------------------------------------------------------------------------------------------------------------------------------------------------------------------------------------------------------------------------------------------------------------------------------------------------------------------------------------------	---------------------------------------------	---------------------------------------------------------------------------------------------------------------------------------------------------------------------------------------------

— VALIDATION IMAGES —

Sample: NIH/3T3(Mouse) Cell Lysate at 30 ug
Thymus (Mouse) Lysate at 40 ug Primary: Anti-BubR1 (bs-5726R) at 1/500 dilution Secondary: IRDye800CW Goat Anti-Rabbit IgG at 1/20000 dilution Predicted band size: 120 kD Observed band size: 120 kD



Sample: HepG2(Human) Cell Lysate at 30 ug
Hcclm3(Human) Cell Lysate at 30 ug Primary: Anti-BubR1 (bs-5726R) at 1/500 dilution Secondary: IRDye800CW Goat Anti-Rabbit IgG at 1/20000 dilution Predicted band size: 120 kD Observed band size: 120 kD

— SELECTED CITATIONS —

- **[IF=4.3]** Qinbing Xue. et al. Lycorine (Lycoris radiata)—a unique natural medicine on breast cancer. J CELL MOL MED. 2024 Aug;28(16):e70032 FCM ;Human. 39175104
- **[IF=1.56]** Qu, Zhongyuan, et al. "Chelidonine induces mitotic slippage and apoptotic-like death in SGC-7901 human gastric carcinoma cells." Molecular medicine reports 13.2 (2016): 1336-1344. WB ;="Human". 26677104